



SRI PADMAVATHI SCHOOL OF PHARMACY

Mohan Gardens, Vaishnavi Nagar, Tiruchanoor (PO), Tirupati Dist, AP - 517503

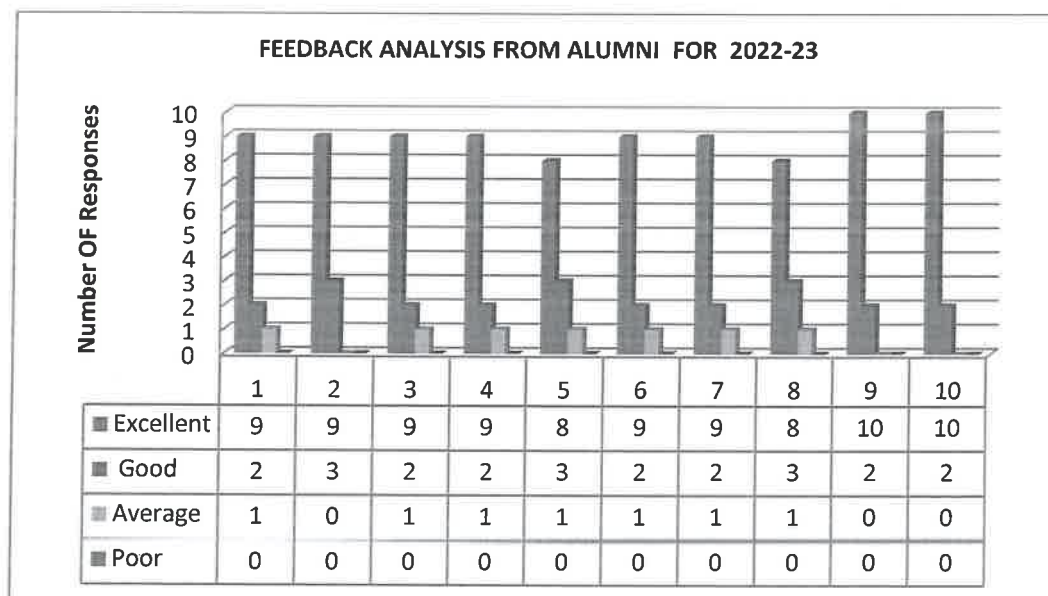
(Approved by PCI, New Delhi, Affiliated to JNTUA, Ananthapuramu,

Recognized Under 2(f) & 12(B) of UGC Act., NBA UG-Pharmacy, NAAC 'A')

FEEDBACK ANALYSIS & ACTION TAKEN REPORT: 2022-23

1.1. FEEDBACK FROM ALUMNI:


S.NO	Feedback parameter	Feedback collection	Feedback submissions/ analysis	Corrective actions taken
1.	Feedback from Alumni	Alumni	In the stake holders feedback, few alumni recommended to enhance interview skills in the students.	Necessary actions were taken to provide more sessions on communication and interview skills.



ANALYSIS REPORT :

The institute will collect the feedback from Alumni, as the Alumni are one of the important stakeholders and analysis was done. In the analysis. The suggestions received from the Alumni they were forwarded to the IQAC for the further actions.


IQAC Co-ordinator


Principal
PRINCIPAL
Sri Padmavathi School of Pharmacy
TIRUCHANOOR
TIRUPATI (A.P.)



SRI PADMAVATHI SCHOOL OF PHARMACY

Mohan Gardens, Vaishnavi Nagar, Tiruchanoor (PO), Tirupati Dist, AP - 517503

(Approved by PCI, New Delhi, Affiliated to JNTUA, Ananthapuramu,

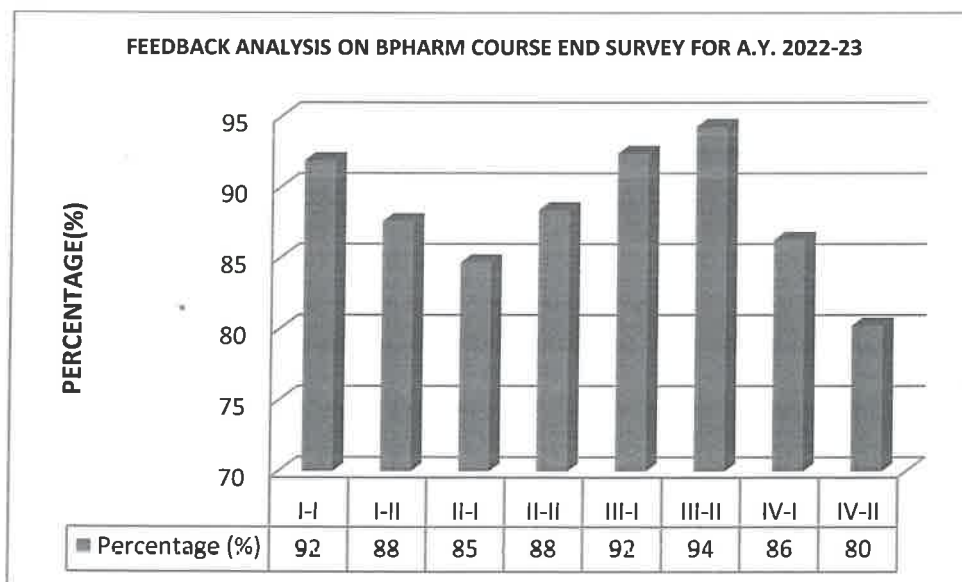
Recognized Under 2(f) & 12(B) of UGC Act., NBA UG-Pharmacy, NAAC 'A')

FEEDBACK ANALYSIS & ACTION TAKEN REPORT: 2022-23

5. FEEDBACK ON COURSE END SURVEY:

S.NO	Feedback parameter	Feedback collection	Feedback submissions/ analysis	Corrective actions taken
1.	Course end survey	All the students from B PHARM, PHARM D.	Majority of the students have given the feedback that they were able to attain the course outcomes to the larger extent.	IQAC team motivated the concerned instructors to achieve the greater attainments of course outcomes and program outcomes

5.1. FEEDBACK ANALYSIS ON B. PHARMACY COURSE END SURVEY FOR 2022-23:



IQAC Co-ordinator

Principal

Principal
Sri Padmavathi School of Pharmacy
TIRUCHANOOR
TIRUPATI (A.P.)



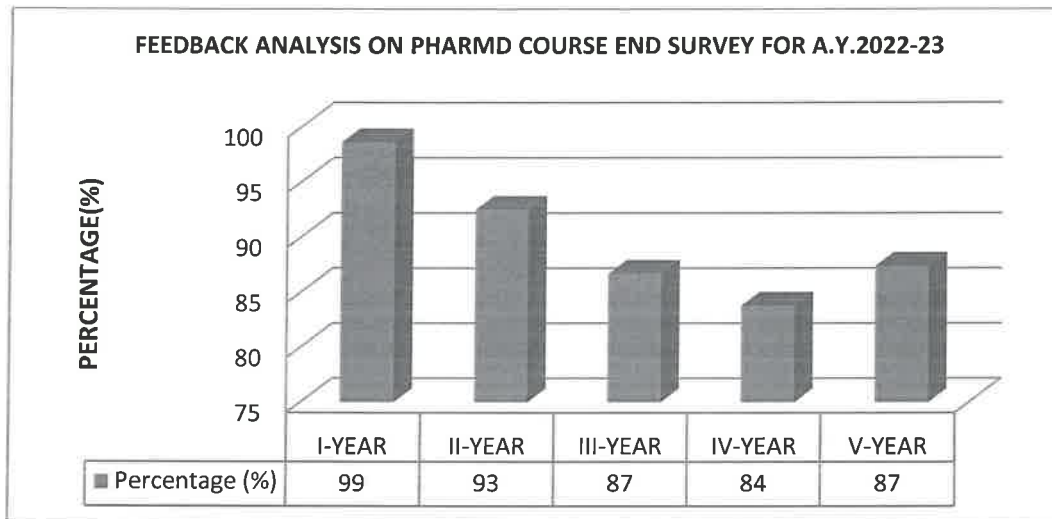
SRI PADMAVATHI SCHOOL OF PHARMACY

Mohan Gardens, Vaishnavi Nagar, Tiruchanoor (PO), Tirupati Dist, AP - 517503

(Approved by PCI, New Delhi, Affiliated to JNTUA, Ananthapuramu,

Recognized Under 2(f) & 12(B) of UGC Act., NBA UG-Pharmacy, NAAC 'A')

5.2. FEEDBACK ANALYSIS ON PHARMD COURSE END SURVEY FOR 2022-23:



ANALYSIS REPORT : The feedback from the students on Course end survey was collected every year and analysis was done. In the analysis, it was observed that most of the students were satisfied. Any inputs received from the students, they will be passed over to the IQAC for the further actions.


IQAC Co-ordinator


Principal
Sri Padmavathi School of Pharmacy
TIRUCHANOOR
TIRUPATI (A.P.)



SRI PADMAVATHI SCHOOL OF PHARMACY

Mohan Gardens, Vaishnavi Nagar, Tiruchanoor (PO), Tirupati Dist, AP - 517503

(Approved by PCI, New Delhi, Affiliated to JNTUA, Ananthapuramu,

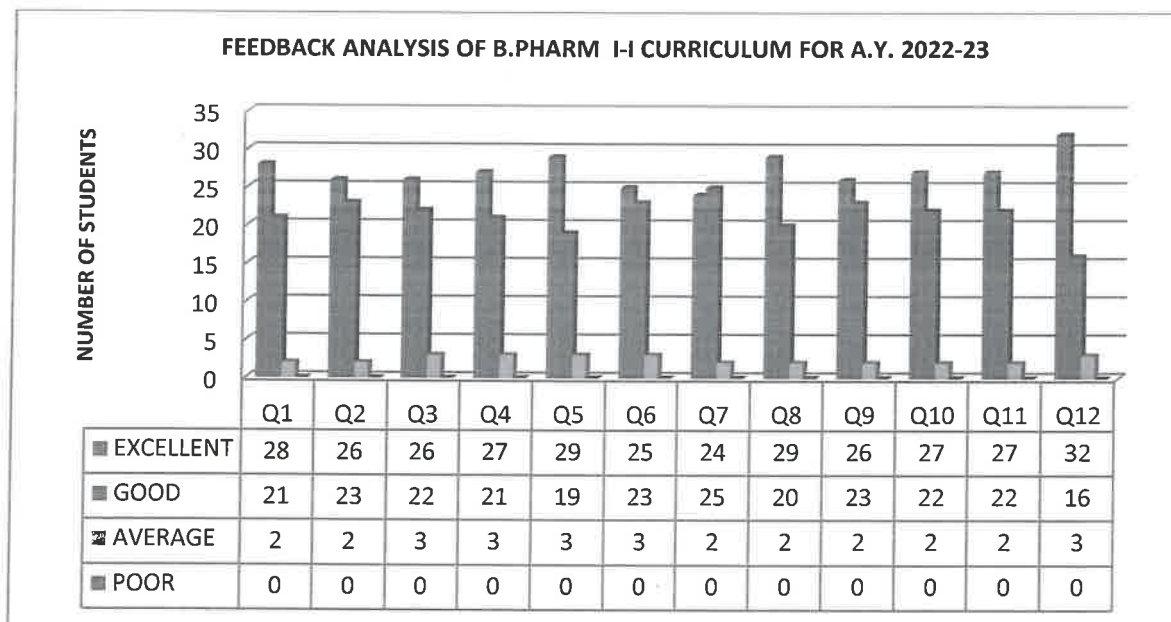
Recognized Under 2(f) & 12(B) of UGC Act., NBA UG-Pharmacy, NAAC'A')

FEEDBACK ANALYSIS & ACTION TAKEN REPORT: 2022-23

3. FEEDBACK ON CURRICULUM:

S.NO	Feedback parameter	Feedback collection	Feedback submissions/ analysis	Corrective actions taken
1.	Feedback on curriculum	All the students from B PHARM, PHARM D, PharmD PB, M PHARM	Most of the students were satisfied with the current curriculum and has submitted the feedback ranging from good to excellent	NIL

3.1. FEEDBACK ANALYSIS ON B. PHARMACY CURRICULUM FOR 2022-23:



IQAC Co-ordinator

PRINCIPAL
Principal
Sri Padmavathi School of Pharmacy
TIRUCHANOOR
TIRUPATI (A.P.)



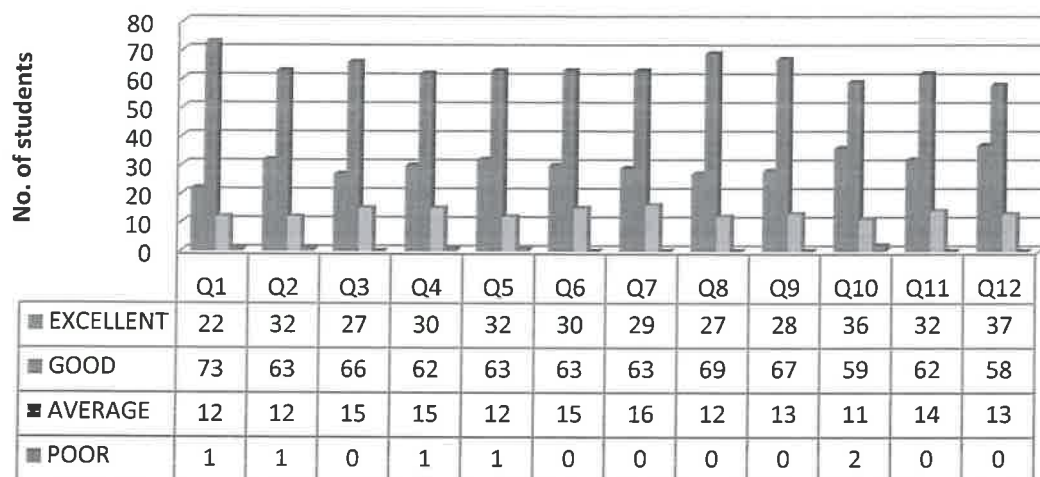
SRI PADMAVATHI SCHOOL OF PHARMACY

Mohan Gardens, Vaishnavi Nagar, Tiruchanoor (PO), Tirupati Dist, AP - 517503

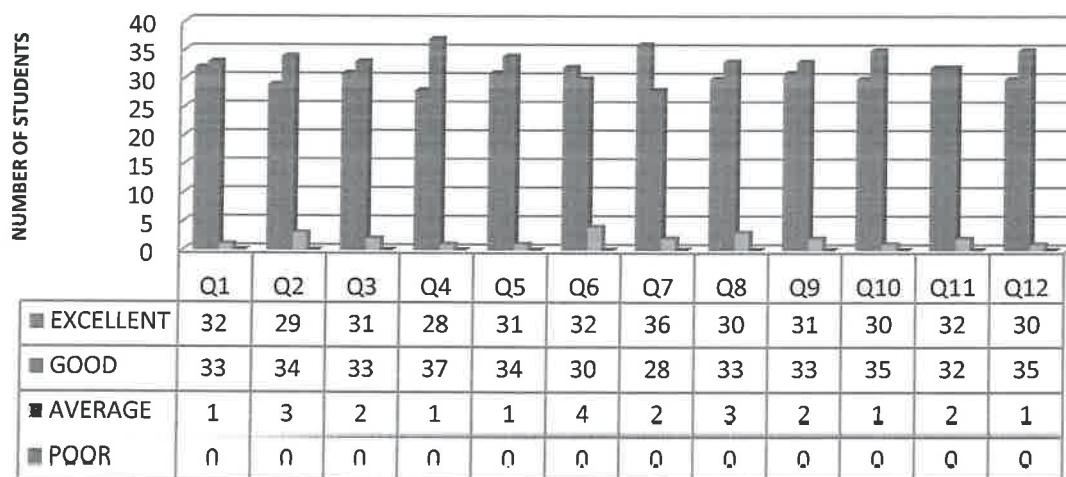
(Approved by PCI, New Delhi, Affiliated to JNTUA, Ananthapuramu,

Recognized Under 2(f) & 12(B) of UGC Act., NBA UG-Pharmacy, NAAC'A')

FEEDBACK ANALYSIS OF B.PHARM I-II CURRICULUM FOR A.Y. 2022-23



FEEDBACK ANALYSIS OF B.PHARM II-I CURRICULUM FOR A.Y. 2022-23



IQAC Co-ordinator

Principal

PRINCIPAL

Sri Padmavathi School of Pharmacy
TIRUCHANOOR
TIRUPATI (A.P.)



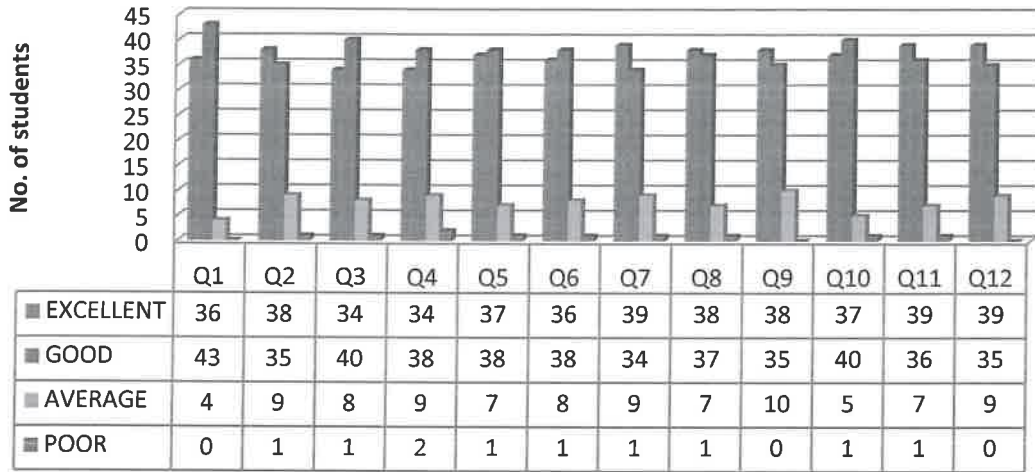
SRI PADMAVATHI SCHOOL OF PHARMACY

Mohan Gardens, Vaishnavi Nagar, Tiruchanoor (PO), Tirupati Dist, AP - 517503

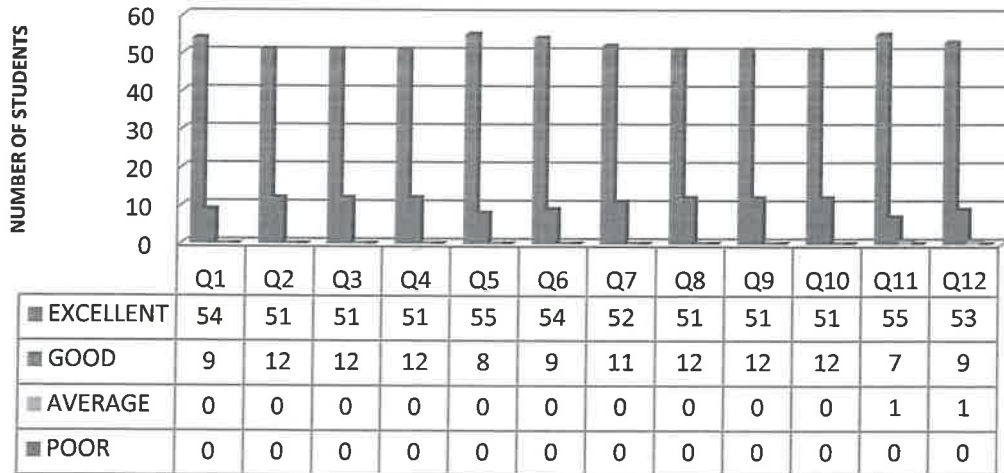
(Approved by PCI, New Delhi, Affiliated to JNTUA, Ananthapuramu,

Recognized Under 2(f) & 12(B) of UGC Act., NBA UG-Pharmacy, NAAC'A')

FEEDBACK ANALYSIS OF B.PHARM II-II CURRICULUM FOR A.Y. 2022-23



FEEDBACK ANALYSIS OF B.PHARM III-I CURRICULUM FOR A.Y. 2022-23



IQAC Co-ordinator

Principal
 Sri Padmavathi School of Pharmacy
 TIRUCHANOOR
 TIRUPATI (A.P.)



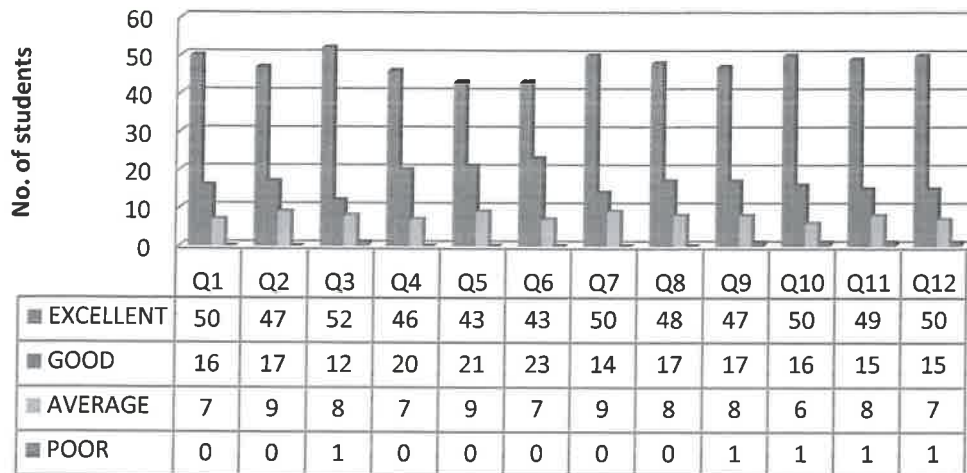
SRI PADMAVATHI SCHOOL OF PHARMACY

Mohan Gardens, Vaishnavi Nagar, Tiruchanoor (PO), Tirupati Dist, AP - 517503

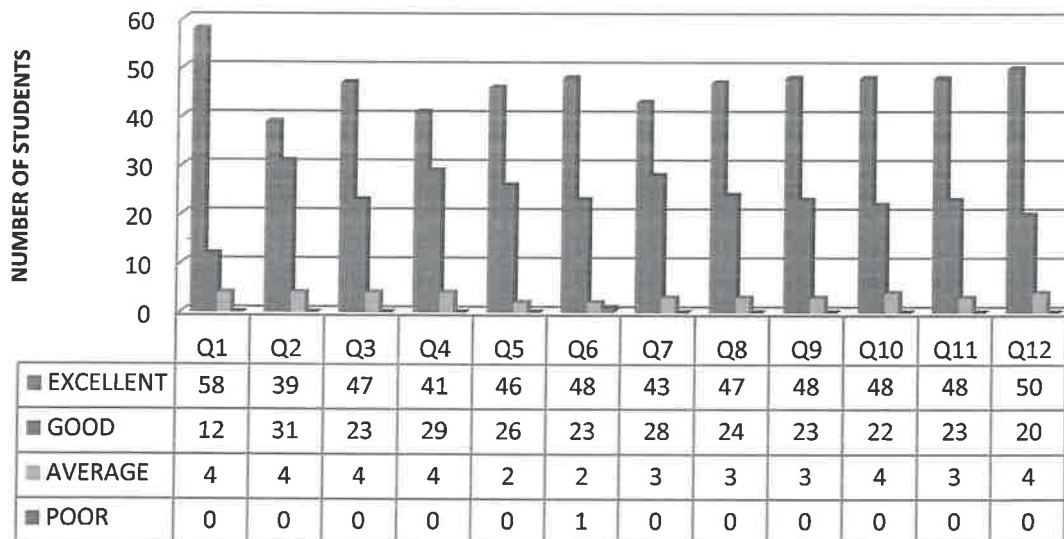
(Approved by PCI, New Delhi, Affiliated to JNTUA, Ananthapuramu,

Recognized Under 2(f) & 12(B) of UGC Act., NBA UG-Pharmacy, NAAC'A')

Feedback Analysis on B-Pharm III-II Curriculum for A.Y. 2022-23



FEEDBACK ANALYSIS OF B.PHARM IV-I CURRICULUM FOR A.Y. 2022-23



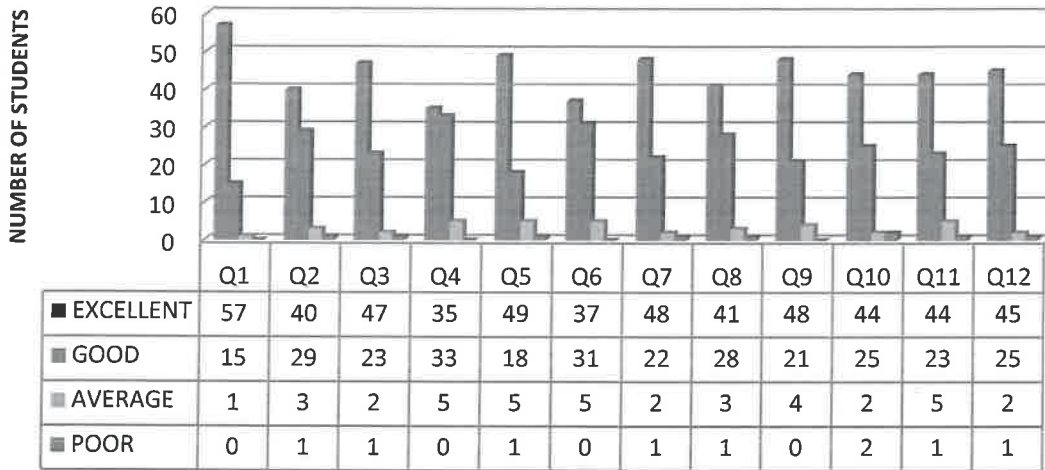
IQAC Co-ordinator

Principal
PRINCIPAL

Sri Padmavathi School of Pharmacy
TIRUCHANOOR
TIRUPATI (A.P.)

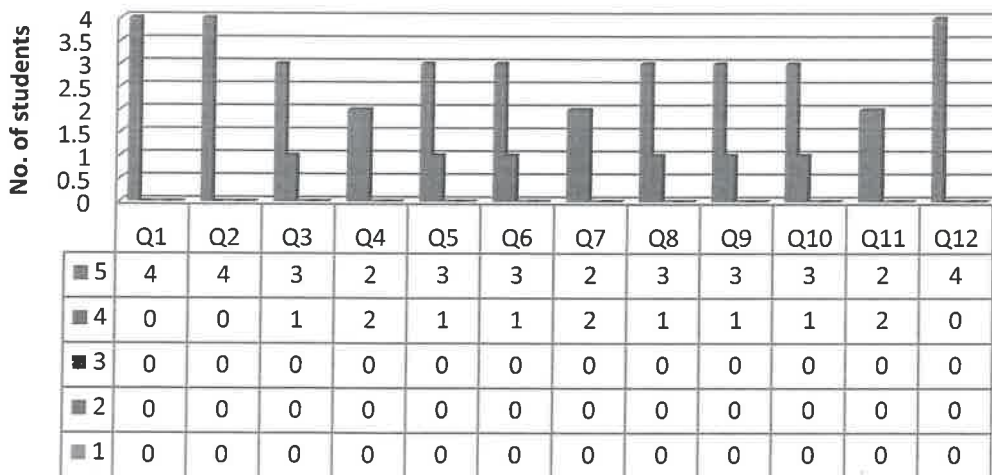


FEEDBACK ANALYSIS OF B.PHARM IV-II CURRICULUM FOR A.Y. 2022-23



3.2. FEEDBACK ANALYSIS ON M. PHARMACY CURRICULUM FOR 2022-23:

Feedback Analysis on M-Pharm Curriculum analysis I-I A.Y.2022-23



[Handwritten Signature]

IQAC Co-ordinator

[Handwritten Signature]
Principal

**Sri Padmavathi School of Pharmacy
 TIRUCHANOOR
 TIRUPATI (A.P.)**



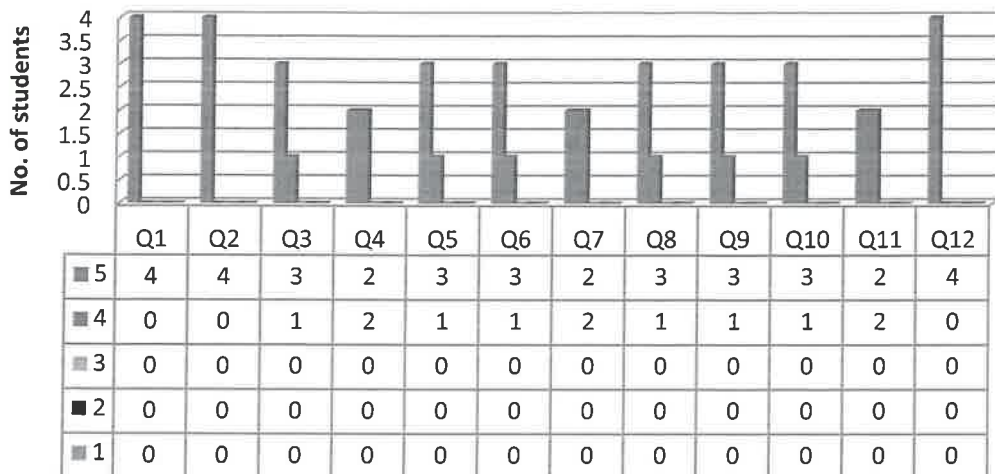
SRI PADMAVATHI SCHOOL OF PHARMACY

Mohan Gardens, Vaishnavi Nagar, Tiruchanoor (PO), Tirupati Dist, AP - 517503

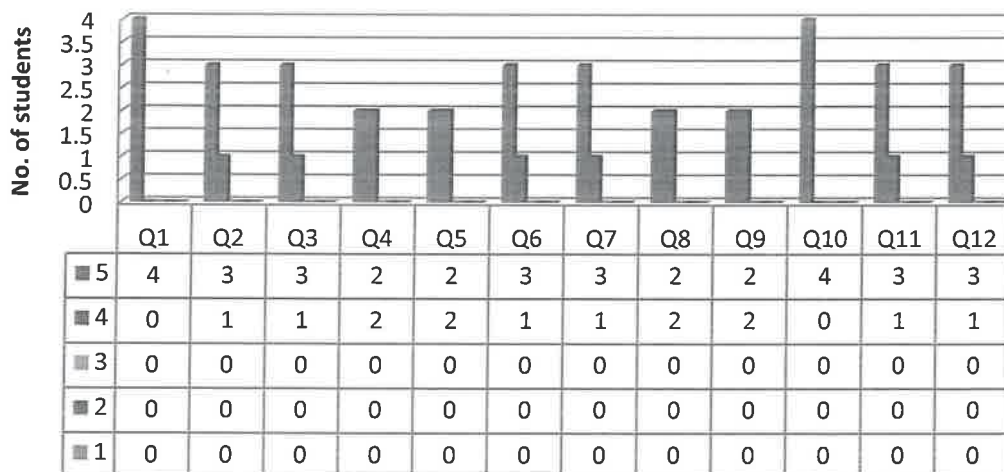
(Approved by PCI, New Delhi, Affiliated to JNTUA, Ananthapuramu,

Recognized Under 2(f) & 12(B) of UGC Act., NBA UG-Pharmacy, NAAC 'A')

Feedback Analysis on M-Pharm Curriculum (Ceutics) I-I A.Y. 2022-23



Feedback Analysis on M-Pharm Curriculum (Analysis) I-II A.Y. 2022-23



IQAC Co-ordinator

Principal
Sri Padmavathi School of Pharmacy
TIRUCHANOOR
TIRUPATI (A.P.)

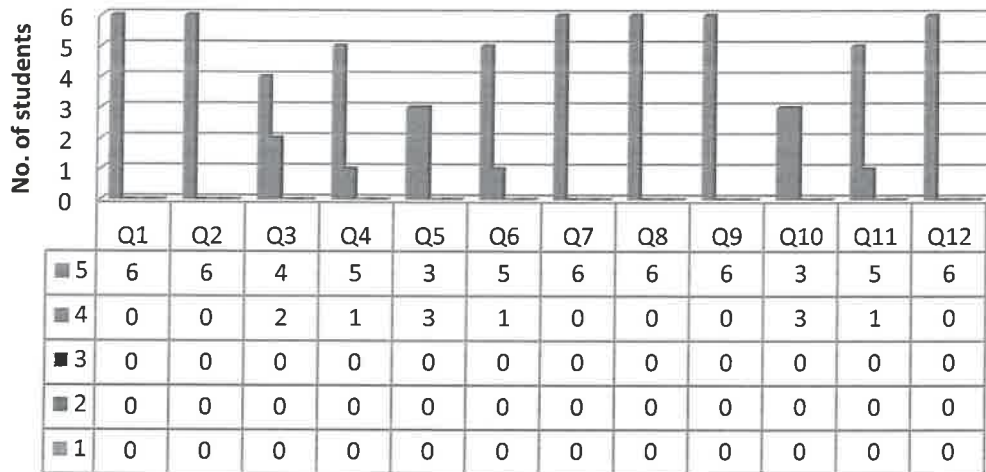


SRI PADMAVATHI SCHOOL OF PHARMACY

Mohan Gardens, Vaishnavi Nagar, Tiruchanoor (PO), Tirupati Dist, AP - 517503

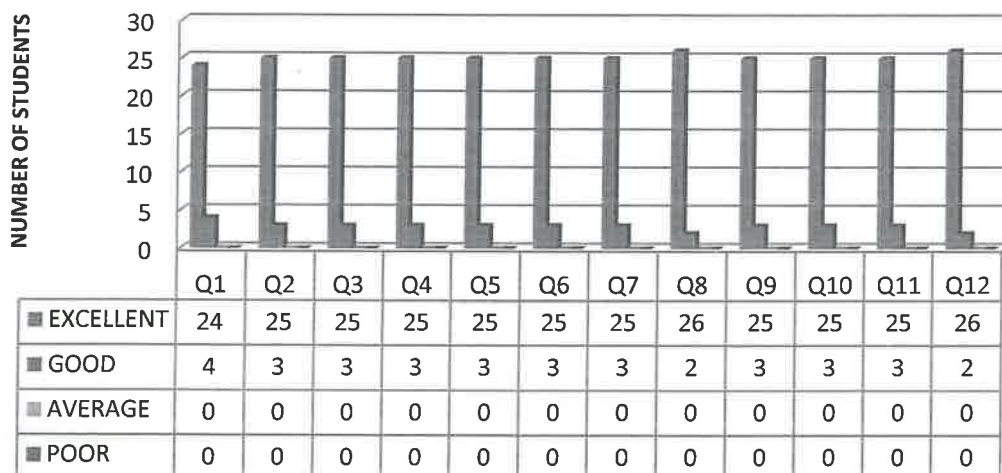
(Approved by PCI, New Delhi, Affiliated to JNTUA, Ananthapuramu,
Recognized Under 2(f) & 12(B) of UGC Act., NBA UG-Pharmacy, NAAC'A')

Feedback Analysis on M-Pharm Curriculum (Ceutics) I-II A.Y. 2022-23



3.3. FEEDBACK ANALYSIS ON PHARMD CURRICULUM FOR 2022-23:

FEEDBACK ANALYSIS OF PHARMD I-YEAR CURRICULUM FOR A.Y. 2022-23




IQAC Co-ordinator


PRINCIPAL
Sri. Padmavathi School of Pharmacy
TIRUCHANOOR
TIRUPATI (A.P.)



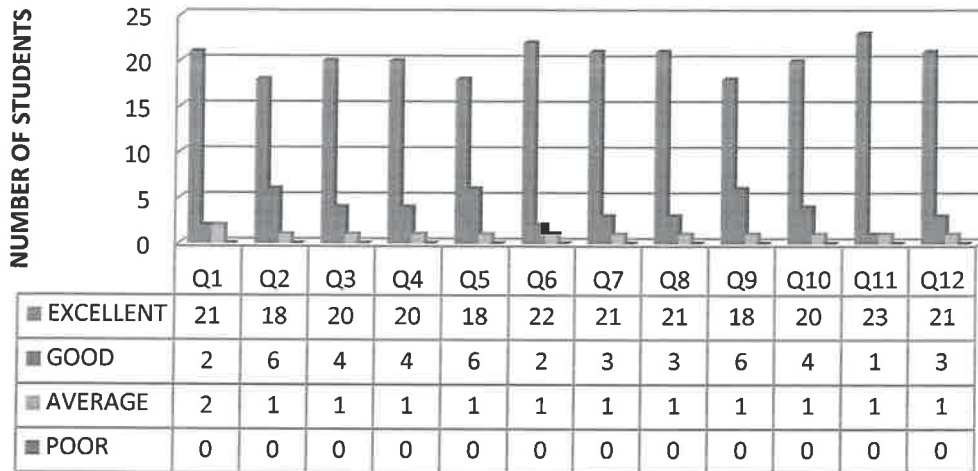
SRI PADMAVATHI SCHOOL OF PHARMACY

Mohan Gardens, Vaishnavi Nagar, Tiruchanoor (PO), Tirupati Dist, AP - 517503

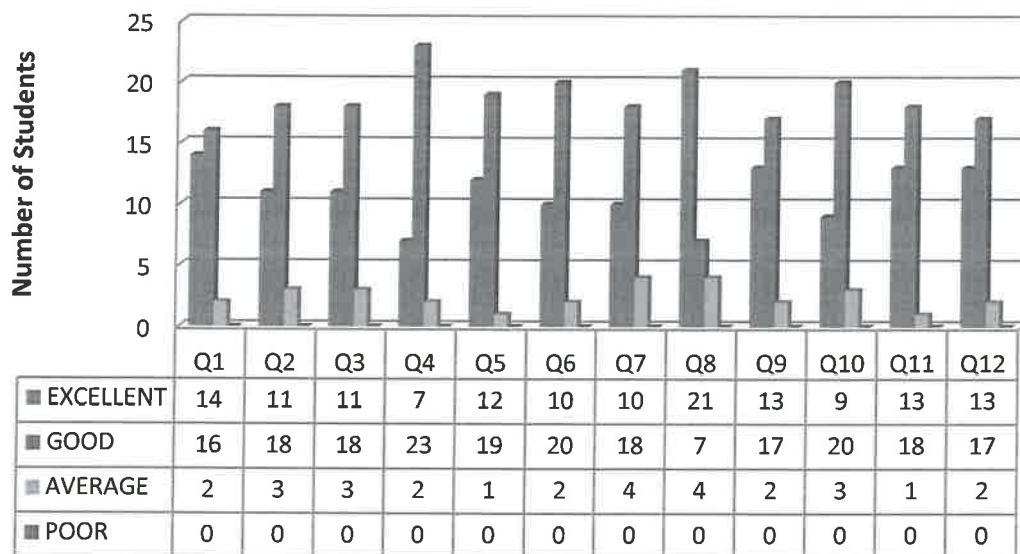
(Approved by PCI, New Delhi, Affiliated to JNTUA, Ananthapuramu,

Recognized Under 2(f) &12(B) of UGC Act., NBA UG-Pharmacy, NAAC'A')


FEEDBACK ANALYSIS OF PHARMD II-YEAR CURRICULUM FOR A.Y.2022-23



FEEDBACK ANALYSIS OF PHARM D III YEAR CURRICULUM FOR A.Y. 2022-23



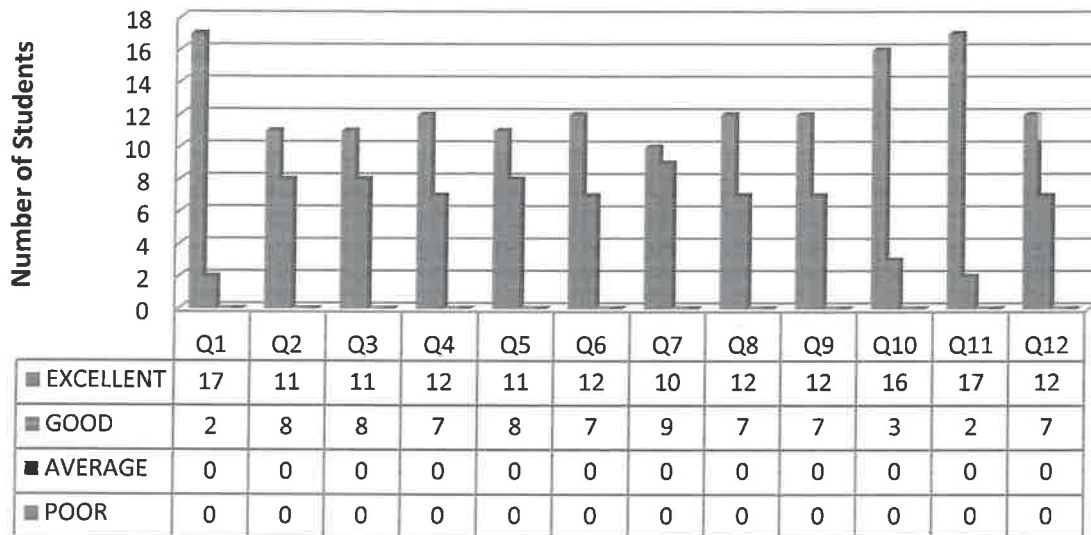
IQAC Co-ordinator


PRINCIPAL
 Sri Padmavathi School of Pharmacy,
 TIRUCHANOOR
 TIRUPATI (A.P.)

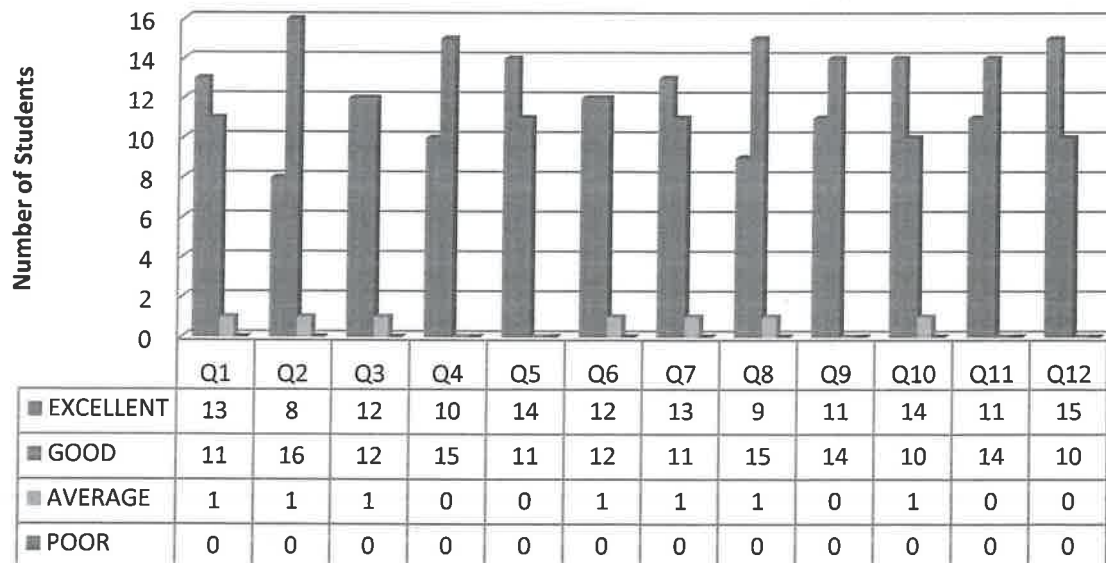


SRI PADMAVATHI SCHOOL OF PHARMACY
 Mohan Gardens, Vaishnavi Nagar, Tiruchanoor (PO), Tirupati Dist, AP - 517503
 (Approved by PCI, New Delhi, Affiliated to JNTUA, Ananthapuramu,
 Recognized Under 2(f) &12(B) of UGC Act., NBA UG-Pharmacy, NAAC'A')

FEEDBACK ANALYSIS OF PHARM D IV YEAR CURRICULUM FOR A.Y. 2022-23



FEEDBACK ANALYSIS OF PHARM D V YEAR CURRICULUM FOR A.Y. 2022-23

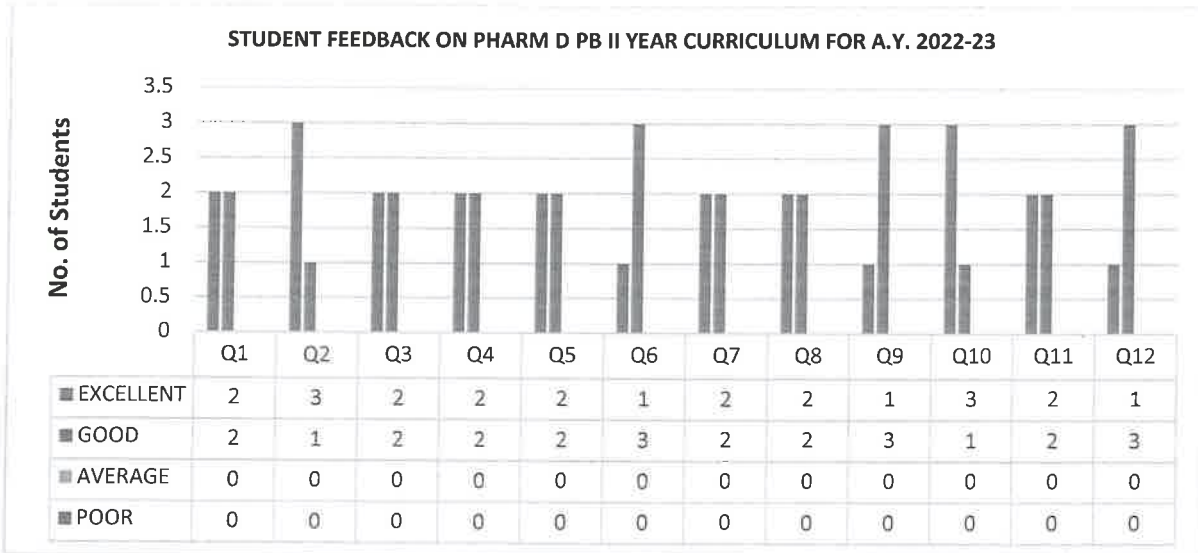


IQAC Co-ordinator

Principal
Sri Padmavathi School of Pharmacy
TIRUCHANOOR
TIRUPATI (A.P.)



3.4. FEEDBACK ANALYSIS ON PHARM D PB CURRICULUM FOR 2022-23:



ANALYSIS REPORT : The feedback forms from the students on curriculum was collected every semester/year and analysis of the feedback forms was done. In the analysis, it was observed that most of the students were satisfied with the current curriculum. Any inputs received from the students, they will be passed over to the IQAC for the further actions.


IQAC Co-ordinator


PRINCIPAL,
Sri Padmavathi School of Pharmacy
TIRUCHANOOR
TIRUPATI (A.P.)



SRI PADMAVATHI SCHOOL OF PHARMACY

Mohan Gardens, Vaishnavi Nagar, Tiruchanoor (PO), Tirupati Dist, AP - 517503

(Approved by PCI, New Delhi, Affiliated to JNTUA, Ananthapuramu,

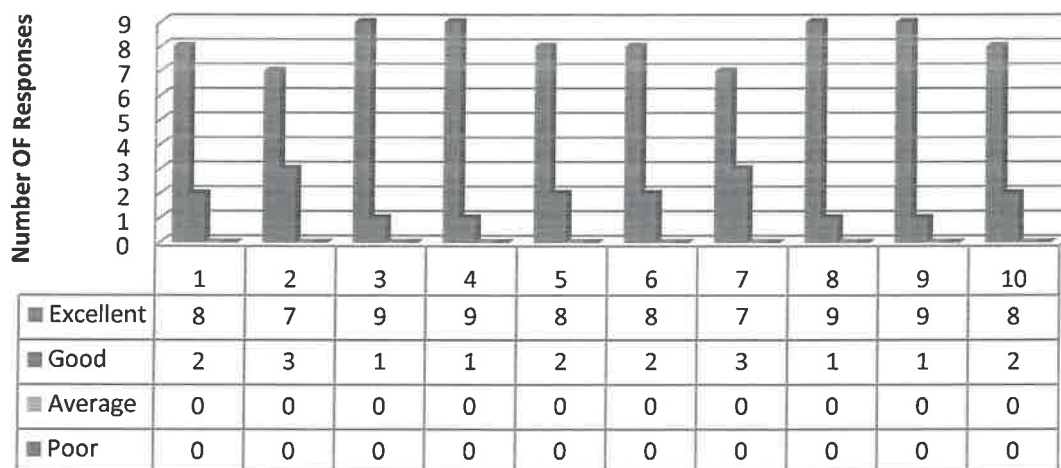
Recognized Under 2(f) & 12(B) of UGC Act., NBA UG-Pharmacy, NAAC'A')

FEEDBACK ANALYSIS & ACTION TAKEN REPORT: 2022-23

1.2. FEEDBACK FROM EMPLOYERS:


S.NO	Feedback parameter	Feedback collection	Feedback submissions/ analysis	Corrective actions taken
1.	Feedback from Employers	Employers	In the stake holders feedback, few Employers recommended to enhance interview skills in the students.	Necessary actions were taken to provide more sessions on communication and interview skills.


FEEDBACK ANALYSIS FROM EMPLOYERS FOR 2022-23



ANALYSIS REPORT :

The institute will collect the feedback from Employers, as the Employers are one of the important stakeholders and analysis was done. In the analysis. The suggestions received from the Employers they were forwarded to the IQAC for the further actions.


IQAC Co-ordinator


Principal
PRINCIPAL
Sri Padmavathi School of Pharmacy
TIRUCHANOOR
TIRUPATI (A.P.)



FEEDBACK ANALYSIS & ACTION TAKEN REPORT: 2022-23

2. FEEDBACK ON FACULTY:

S.NO	Feedback parameter	Feedback collection	Feedback submissions/ analysis	Corrective actions taken
1.	Feedback on Faculty	B PHARM, PHARM D, Pharm PB, M PHARM	<p>Few Students from B PHARM I Year I Sem has given poor feedback on Prakash sir, A.C.Ayyapan, A.Ashok and A.Suma sree.</p> <p>Few Students from B PHARM I Year II Sem has given average feedback on Raj kumar and in II-Year II-Sem students has given average feedback on A.Ashok.</p> <p>Few Students from B PHARM II YEAR I SEM has given average feedback on the faculty U. Lakshmi Devi.</p> <p>Remaining students from B PHARM, PHARM D, Pharm PB, M PHARM were satisfied with all the faculty and their feedbacks ranges from good to excellent.</p>	<p>The Principal sir and the IQAC coordinator advised the faculty to change the teaching methodology and has given inputs for better teaching</p> <p>The IQAC discussed about the feedback given by the students and appreciations were made for good performance.</p>


IQAC Co-ordinator

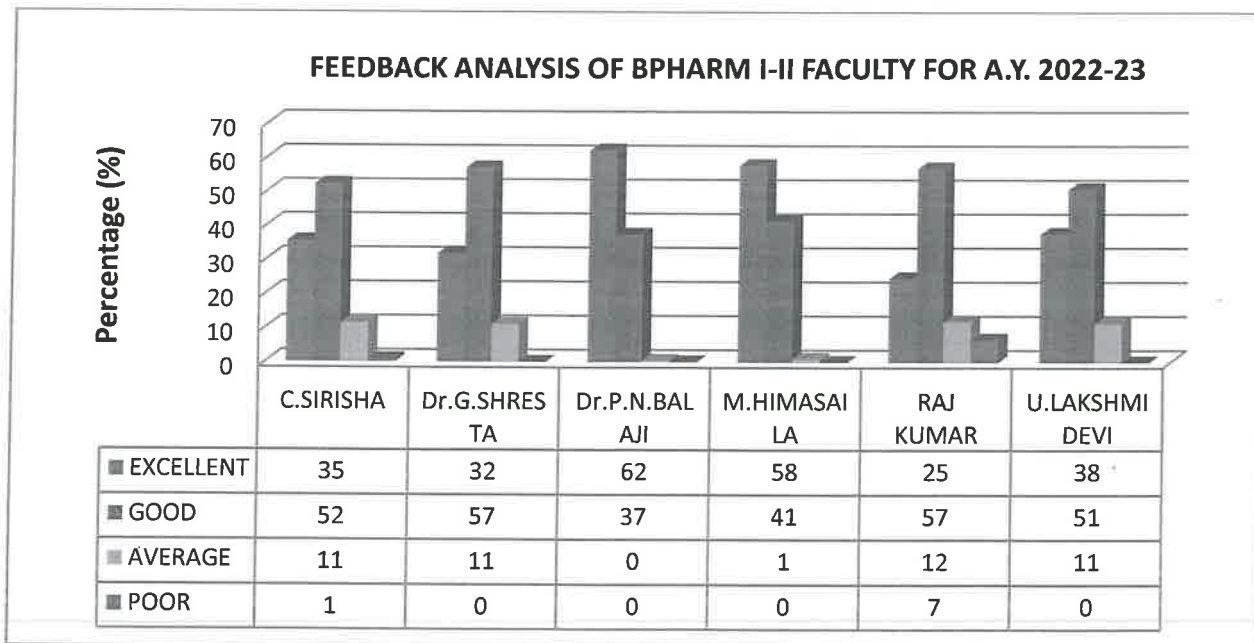
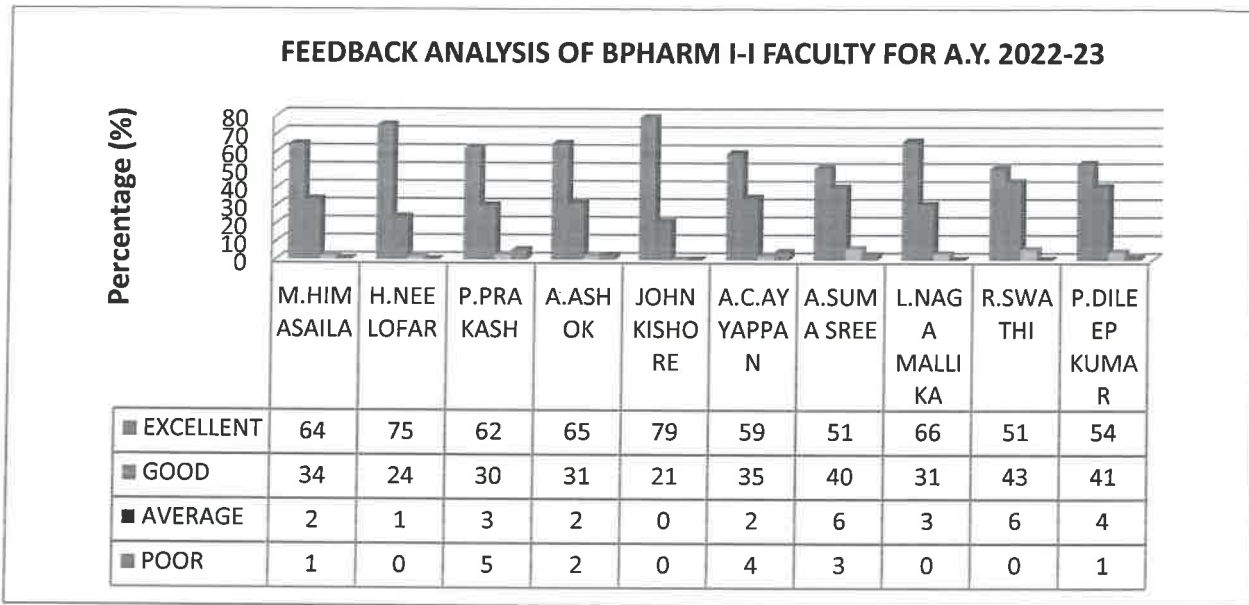

PRINCIPAL
Sri Padmavathi School of Pharmacy,
TIRUCHANOOR
TIRUPATI (A.P.)



SRI PADMAVATHI SCHOOL OF PHARMACY
 Mohan Gardens, Vaishnavi Nagar, Tiruchanoor (PO), Tirupati Dist, AP - 517503
 (Approved by PCI, New Delhi, Affiliated to JNTUA, Ananthapuramu,
 Recognized Under 2(f) & 12(B) of UGC Act., NBA UG-Pharmacy, NAAC'A')

2.1. FEEDBACK ANALYSIS ON B. PHARMACY FACULTY FOR 2022-23:

The feedback on B. Pharm faculty for Academic year 2022-23 was presented below:



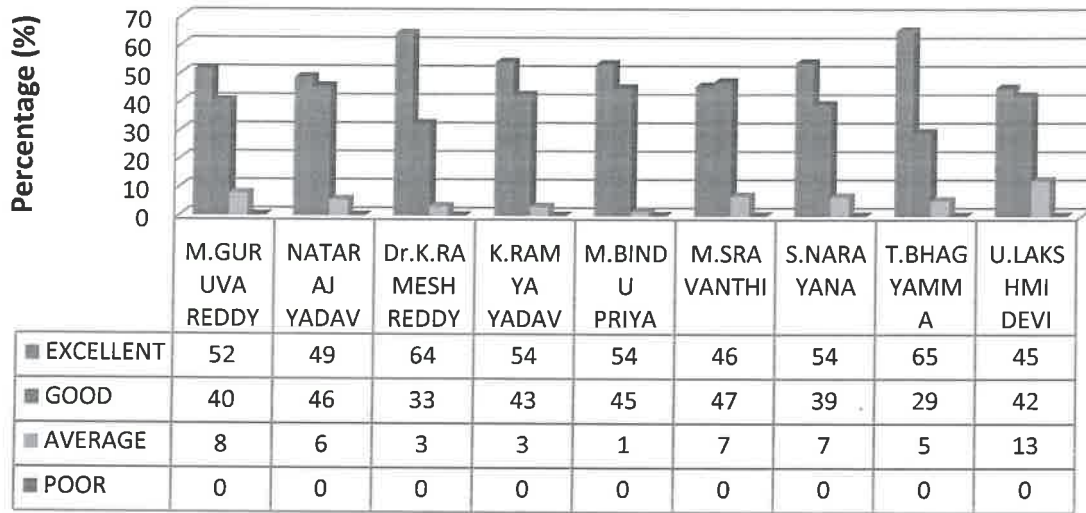
IQAC Co-ordinator

Principal
 Sri Padmavathi School of Pharmacy
 TIRUCHANOOR
 TIRUPATI (A.P.)

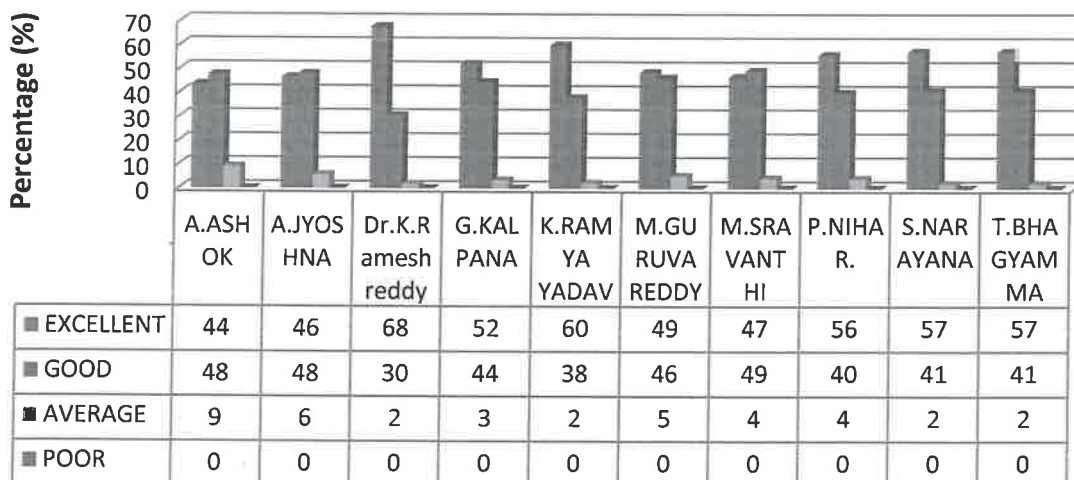


SRI PADMAVATHI SCHOOL OF PHARMACY
 Mohan Gardens, Vaishnavi Nagar, Tiruchanoor (PO), Tirupati Dist, AP - 517503
 (Approved by PCI, New Delhi, Affiliated to JNTUA, Ananthapuramu,
 Recognized Under 2(f) & 12(B) of UGC Act., NBA UG-Pharmacy, NAAC'A')

FEEDBACK ANALYSIS OF BPHARM II-I FACULTY FOR A.Y. 2022-23



FEEDBACK ANALYSIS OF BPHARM II-II FACULTY FOR A.Y. 2022-23



IQAC Co-ordinator

Principal
Sri Padmavathi School of Pharmacy
TIRUCHANOOR
TIRUPATI (A.P.)



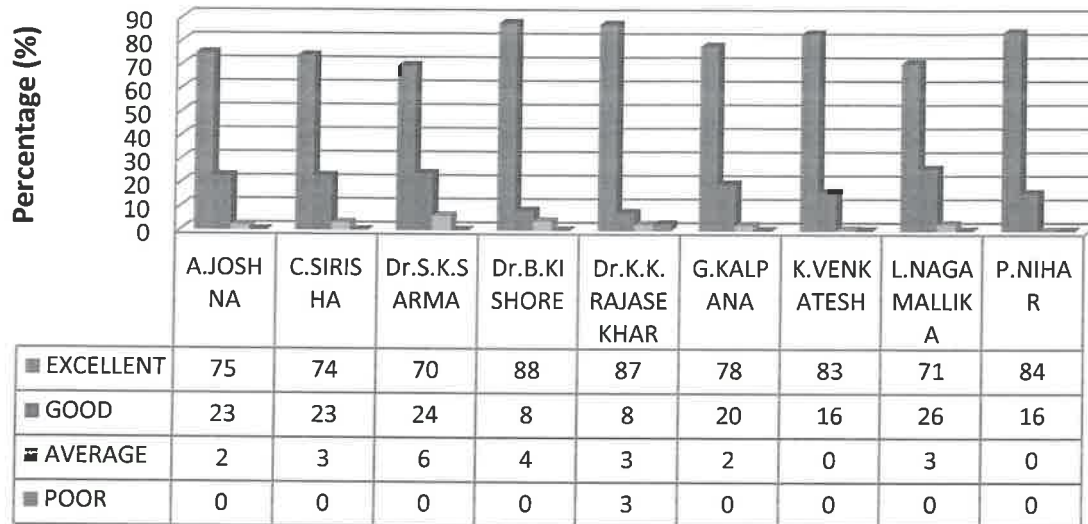
SRI PADMAVATHI SCHOOL OF PHARMACY

Mohan Gardens, Vaishnavi Nagar, Tiruchanoor (PO), Tirupati Dist, AP - 517503

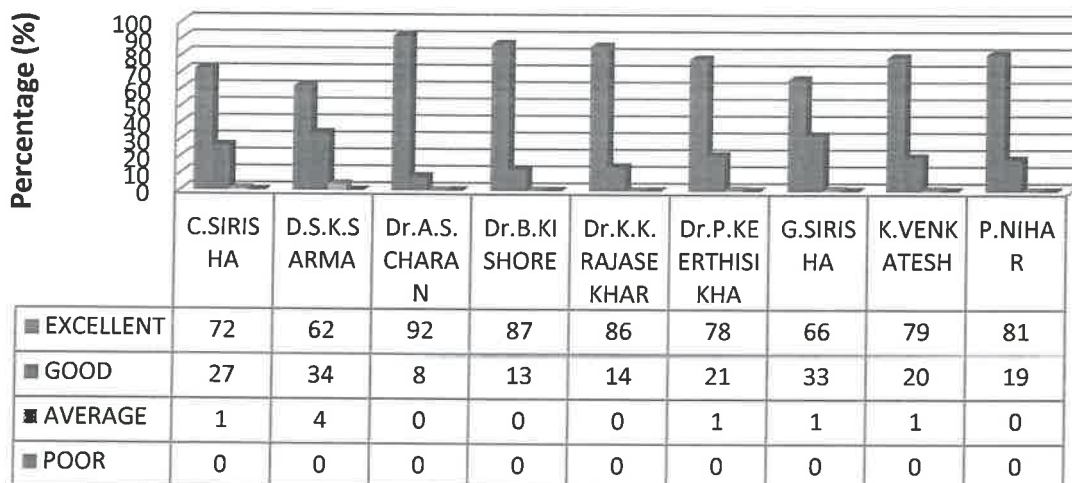
(Approved by PCI, New Delhi, Affiliated to JNTUA, Ananthapuramu,

Recognized Under 2(f) & 12(B) of UGC Act., NBA UG-Pharmacy, NAAC 'A')

FEEDBACK ANALYSIS OF BPHARM III-I FACULTY FOR A.Y. 2022-23



FEEDBACK ANALYSIS OF BPHARM III-II FACULTY FOR A.Y. 2022-23



IQAC Co-ordinator

Principal
PRINCIPAL

Sri Padmavathi School of Pharmacy
TIRUCHANOOR
TIRUPATI (A.P.)



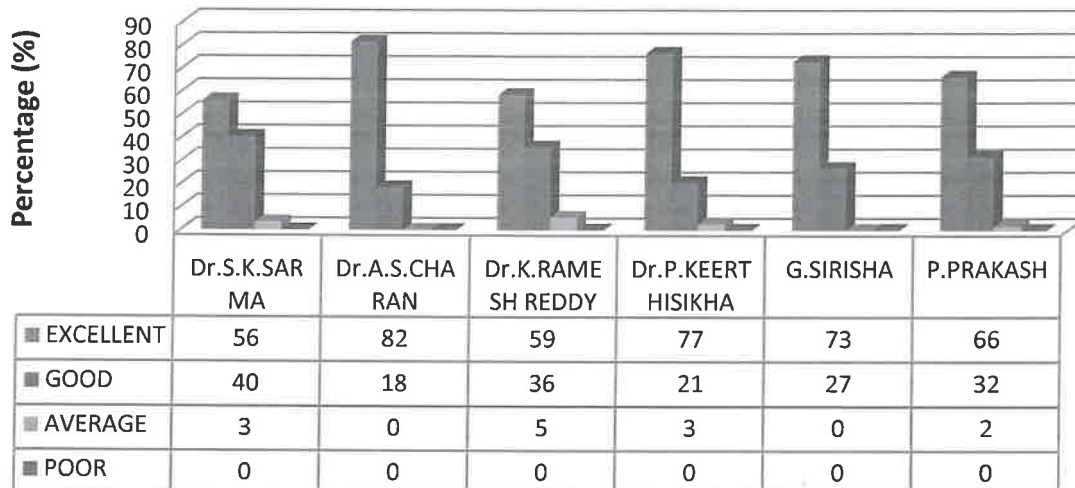
SRI PADMAVATHI SCHOOL OF PHARMACY

Mohan Gardens, Vaishnavi Nagar, Tiruchanoor (PO), Tirupati Dist, AP - 517503

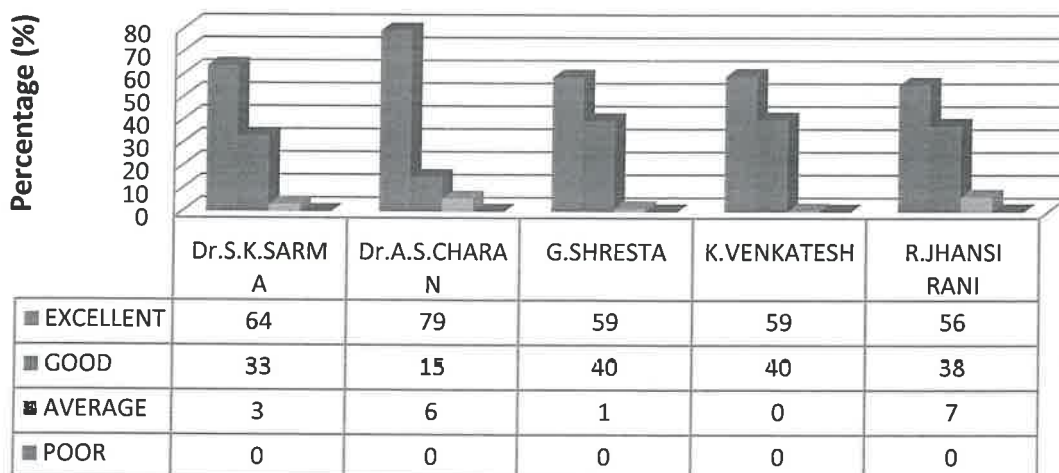
(Approved by PCI, New Delhi, Affiliated to JNTUA, Ananthapuramu,

Recognized Under 2(f) & 12(B) of UGC Act., NBA UG-Pharmacy, NAAC'A')

FEEDBACK ANALYSIS OF BPHARM IV-I FACULTY FOR A.Y. 2022-23



FEEDBACK ANALYSIS OF BPHARM IV-II FACULTY FOR A.Y. 2022-23



IQAC Co-ordinator

Principal

Sri Padmavathi School of Pharmacy
TIRUCHANOOR
TIRUPATI (A.P.)



SRI PADMAVATHI SCHOOL OF PHARMACY

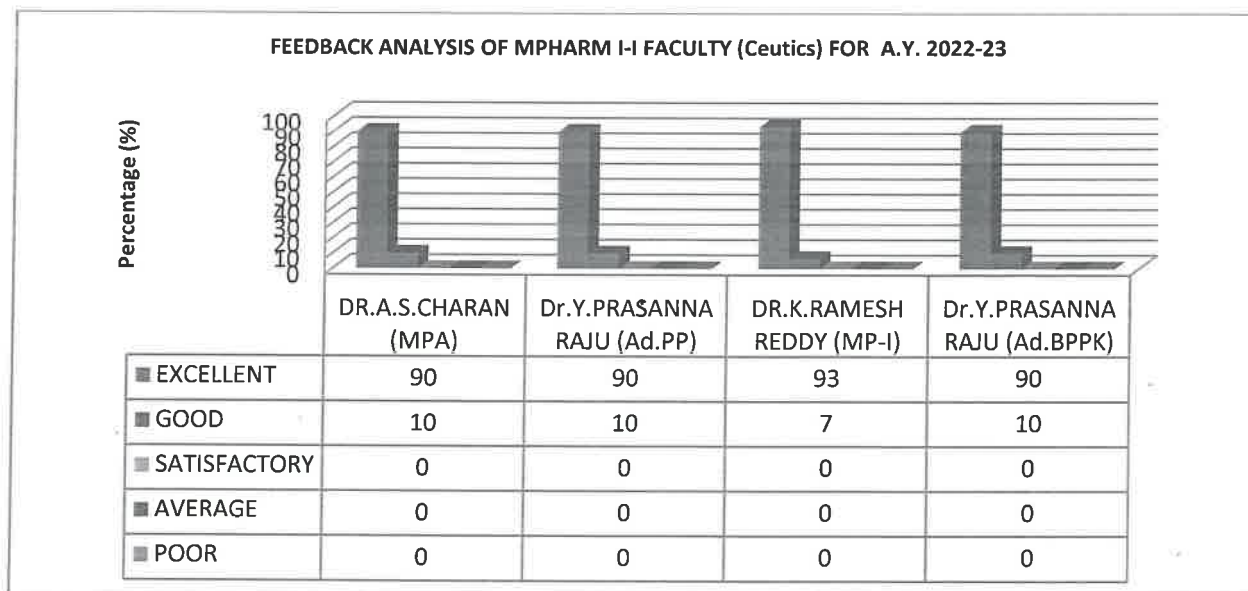
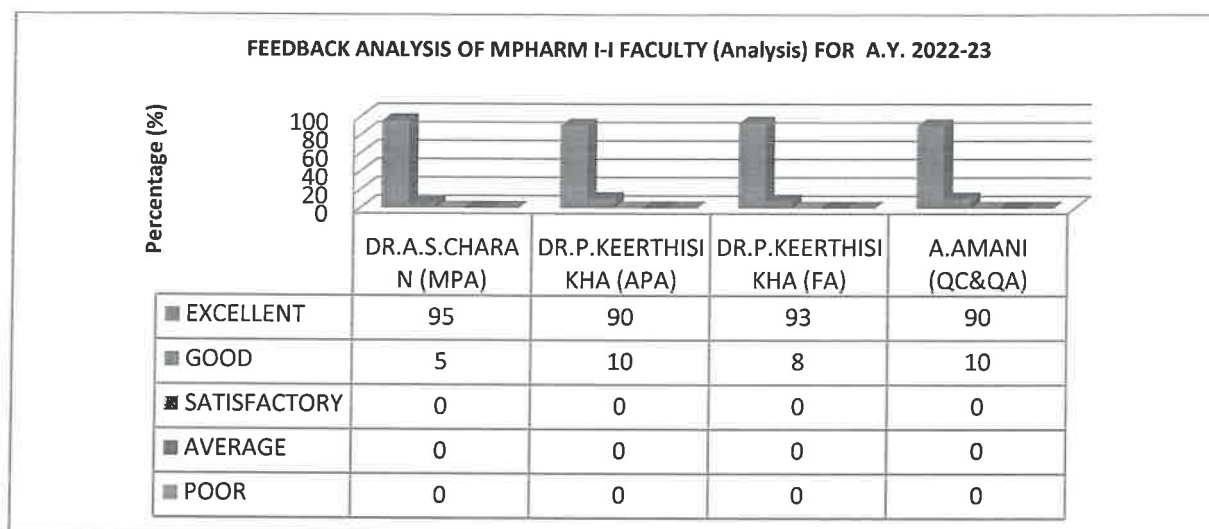
Mohan Gardens, Vaishnavi Nagar, Tiruchanoor (PO), Tirupati Dist, AP - 517503

(Approved by PCI, New Delhi, Affiliated to JNTUA, Ananthapuramu,

Recognized Under 2(f) & 12(B) of UGC Act., NBA UG-Pharmacy, NAAC'A')

2.2. FEEDBACK ANALYSIS ON M. PHARMACY FACULTY FOR 2022-23:

The feedback on M. Pharm faculty for Academic year 2022-23 was presented below:



IQAC Co-ordinator

Principal
Sri Padmavathi School of Pharmacy
TIRUCHANOOR
TIRUPATI (A.P.)



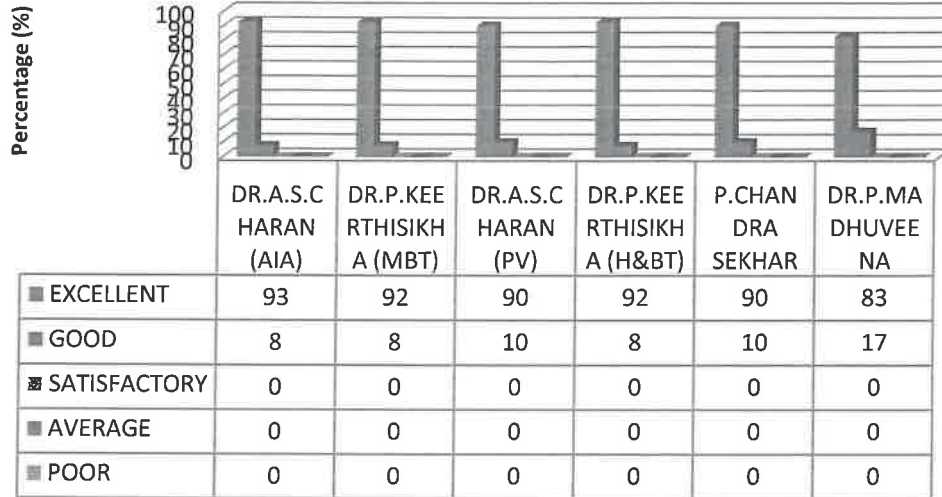
SRI PADMAVATHI SCHOOL OF PHARMACY

Mohan Gardens, Vaishnavi Nagar, Tiruchanoor (PO), Tirupati Dist, AP - 517503

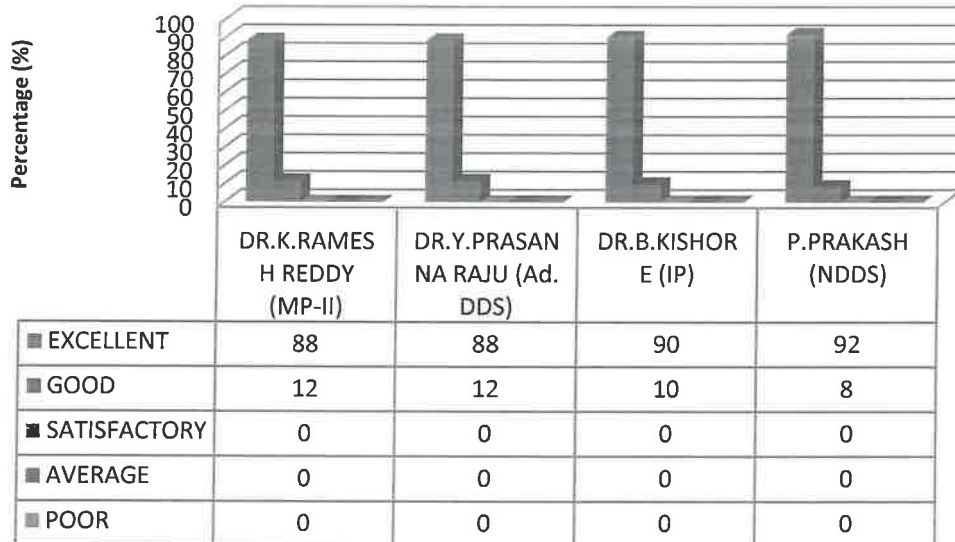
(Approved by PCI, New Delhi, Affiliated to JNTUA, Ananthapuramu,

Recognized Under 2(f) & 12(B) of UGC Act., NBA UG-Pharmacy, NAAC 'A')

FEEDBACK ANALYSIS OF MPHARM I-II FACULTY (Analysis) FOR A.Y. 2022-23



FEEDBACK ANALYSIS OF MPHARM I-II FACULTY (Ceutics) FOR A.Y. 2022-23



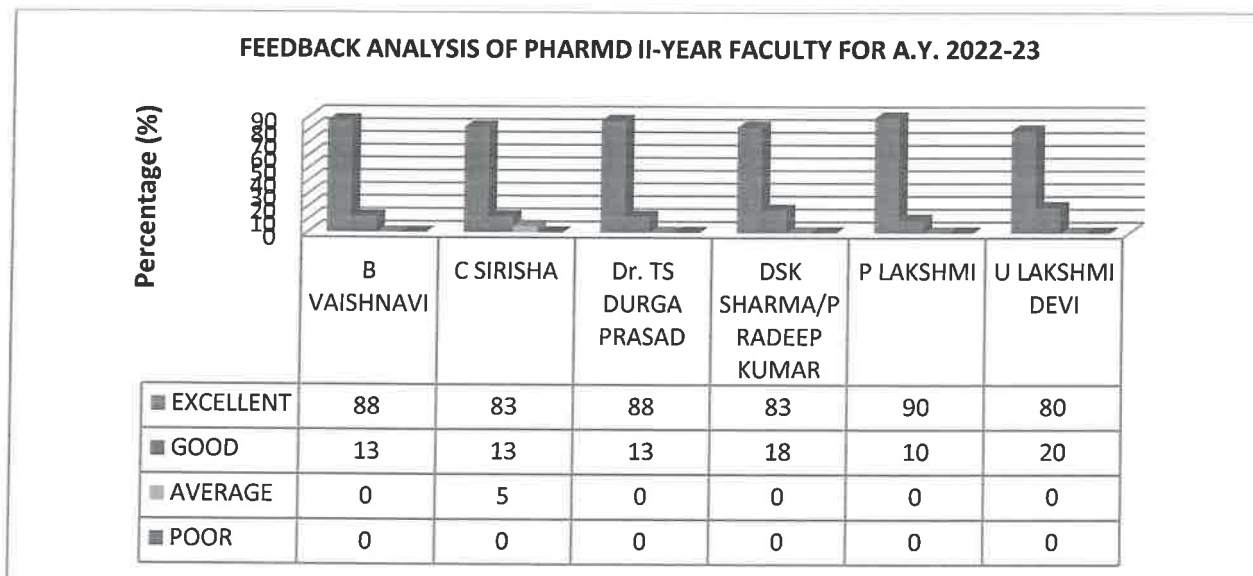
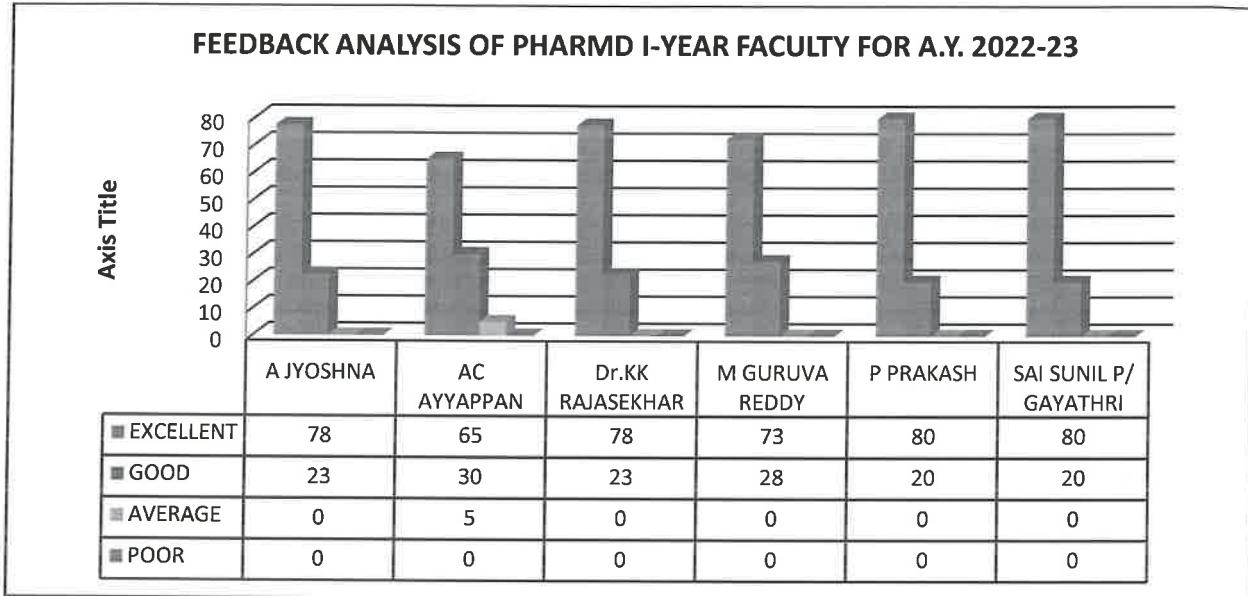
IQAC Co-ordinator

Principal
Sri Padmavathi School of Pharmacy
TIRUCHANOOR
TIRUPATI (A.P.)



2.3. FEEDBACK ANALYSIS ON PHARMD FACULTY FOR 2022-23:

The feedback on PharmD faculty for Academic year 2022-23 was presented below:




 IQAC Co-ordinator


 PRINCIPAL
 Sri Padmavathi School of Pharmacy
 TIRUCHANOOR
 TIRUPATI (A.P.)



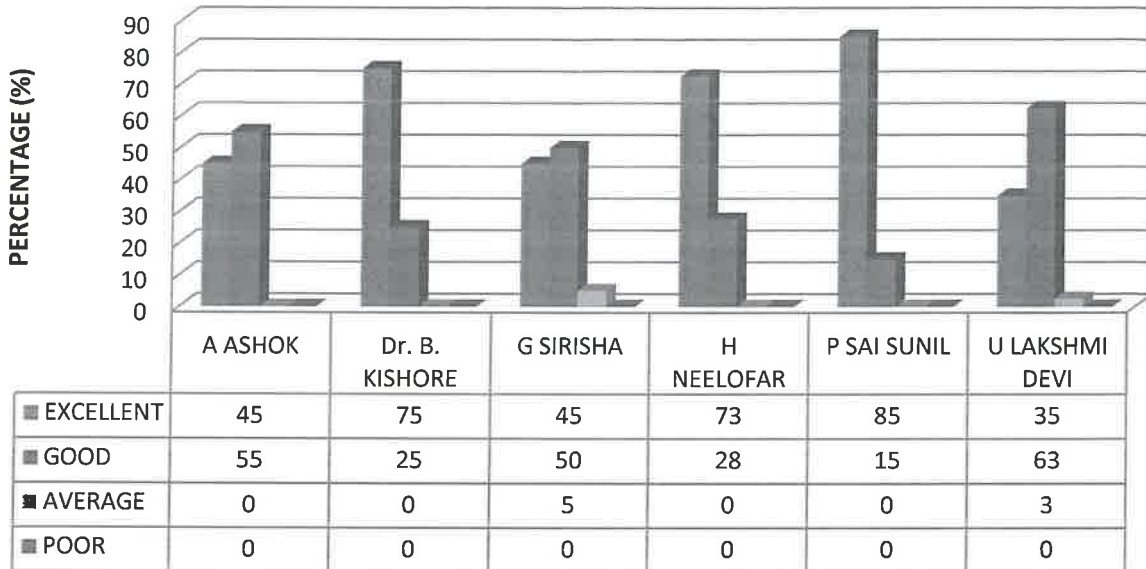
SRI PADMAVATHI SCHOOL OF PHARMACY

Mohan Gardens, Vaishnavi Nagar, Tiruchanoor (PO), Tirupati Dist, AP - 517503

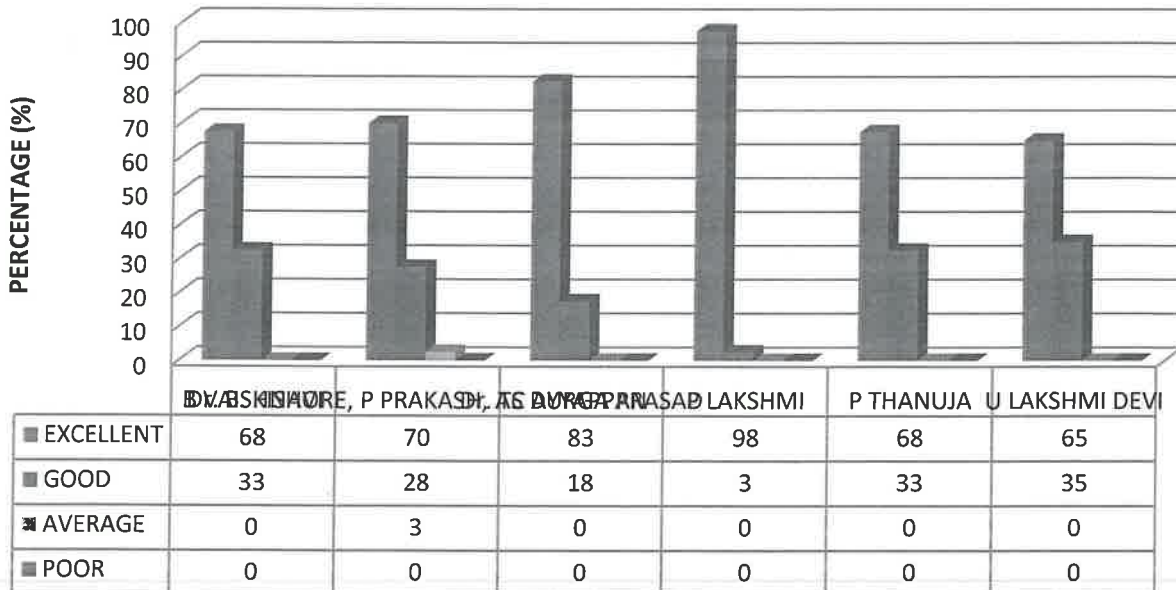
(Approved by PCI, New Delhi, Affiliated to JNTUA, Ananthapuramu,

Recognized Under 2(f) & 12(B) of UGC Act., NBA UG-Pharmacy, NAAC'A')


FEEDBACK ANALYSIS OF PHARM D III-YEAR FACULTY FOR A.Y. 2022-23



FEEDBACK ANALYSIS OF PHARM D IV-YEAR FACULTY FOR A.Y. 2022-23



IQAC Co-ordinator


PRINCIPAL
 Sri Padmavathi School of Pharmacy
 TIRUCHANOOR
 TIRUPATI (A.P.)



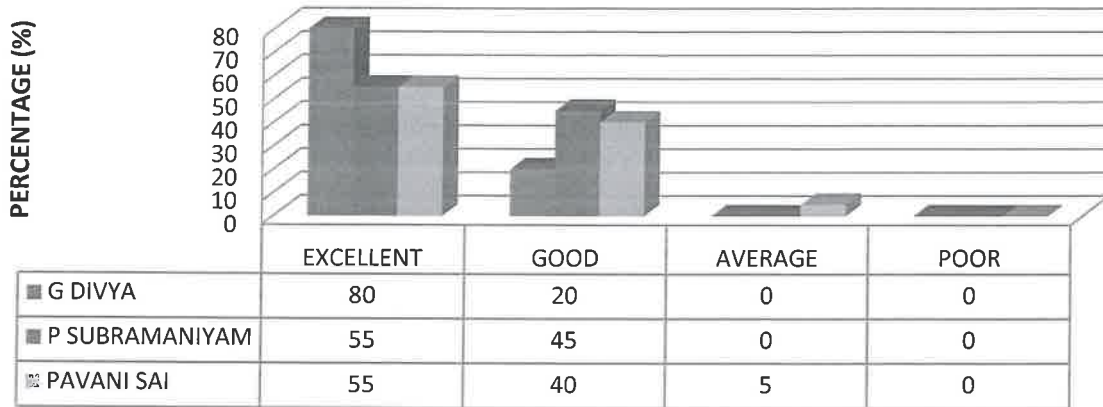
SRI PADMAVATHI SCHOOL OF PHARMACY

Mohan Gardens, Vaishnavi Nagar, Tiruchanoor (PO), Tirupati Dist, AP - 517503

(Approved by PCI, New Delhi, Affiliated to JNTUA, Ananthapuramu,

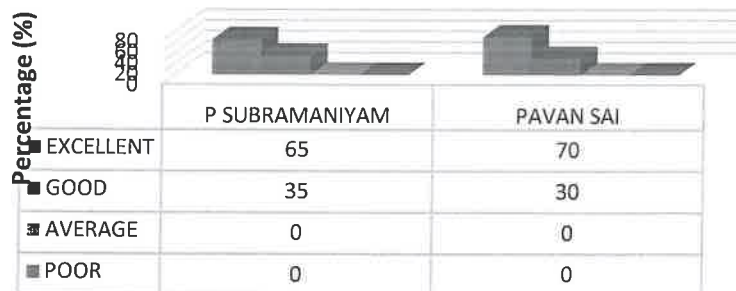
Recognized Under 2(f) & 12(B) of UGC Act., NBA UG-Pharmacy, NAAC'A')

FEEDBACK ANALYSIS OF PHARM D V-YEAR FACULTY FOR A.Y. 2022-23



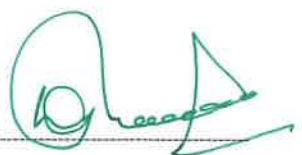
2.4. FEEDBACK ANALYSIS ON PHARM D PB FACULTY FOR 2022-23:

STUDENT FEEDBACK ON PHARM D PB II YEAR FACULTY FOR A.Y. 2022-23



ANALYSIS REPORT : Feedback on faculty was collected during the end of the semester/ year by the IQAC members. Analysis on the collected forms was done and then the IQAC committee submits the analysis report to the management. The management will review the analysis and takes the necessary actions.


IQAC Co-ordinator


Principal
Sri Padmavathi School of Pharmacy
TIRUCHANOOR
TIRUPATI (A.P.)

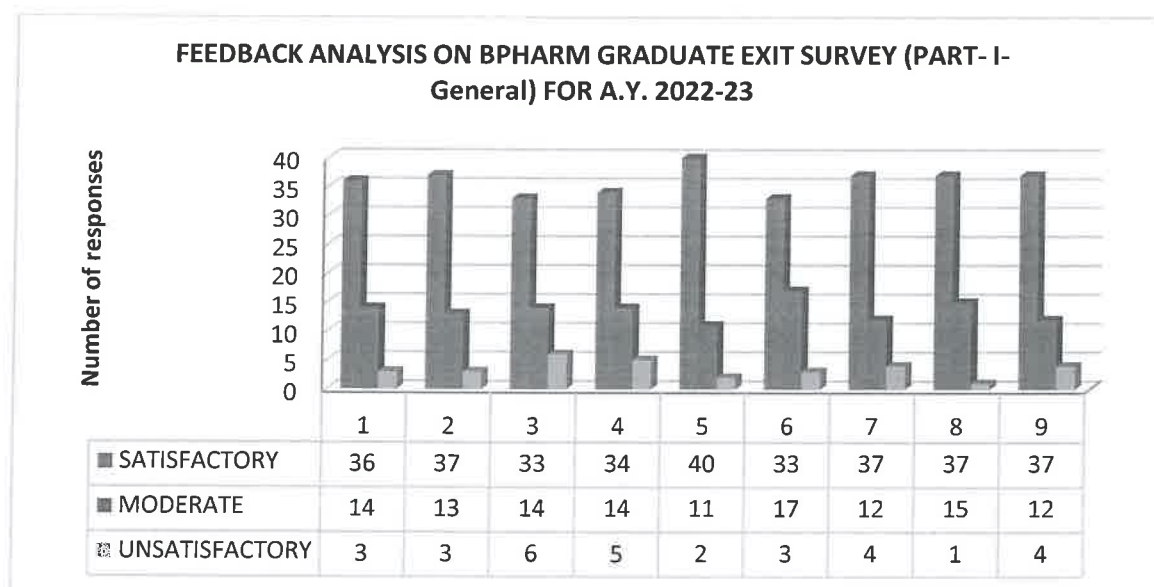


FEEDBACK ANALYSIS & ACTION TAKEN REPORT: 2022-23

6. FEEDBACK ON GRADUATE EXIT SURVEY:

S.NO	Feedback parameter	Feedback collection	Feedback submissions/ analysis	Corrective actions taken
1.	Graduate exit survey	B PHARM (IV-Year), PHARM D (V-Year), M PHARM (II-Year)	Most of the students were satisfied with the current PO and PEOs and has submitted the feedback ranging from good to excellent	NIL

6.1. FEEDBACK ANALYSIS ON B. PHARMACY GRADUATE EXIT SURVEY FOR 2022-23:



PK
IQAC Co-ordinator

Prudhvi
Principal
Sri Padmavathi School of Pharmacy
TIRUCHANOOR
TIRUPATI (A.P.)



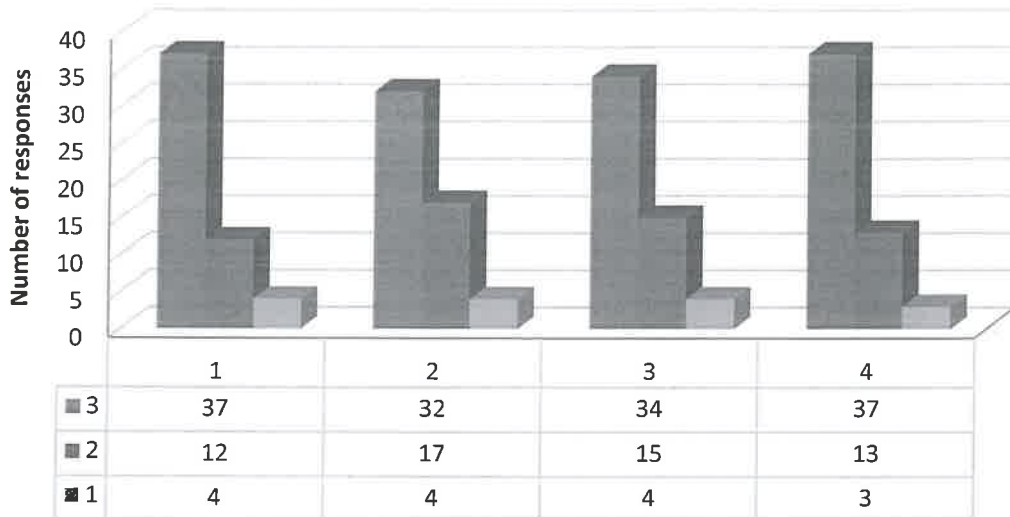
SRI PADMAVATHI SCHOOL OF PHARMACY

Mohan Gardens, Vaishnavi Nagar, Tiruchanoor (PO), Tirupati Dist, AP - 517503

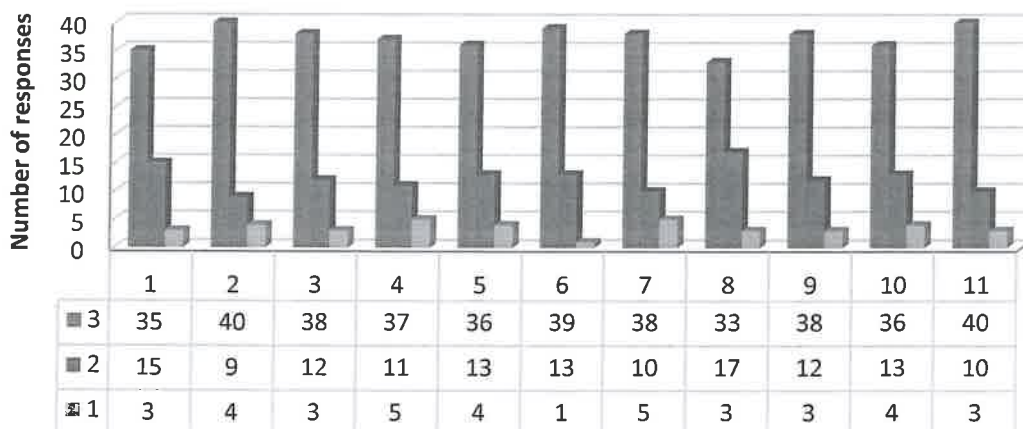
(Approved by PCI, New Delhi, Affiliated to JNTUA, Ananthapuramu,

Recognized Under 2(f) & 12(B) of UGC Act., NBA UG-Pharmacy, NAAC'A')

FEEDBACK ANALYSIS ON BPHARM GRADUATE EXIT SURVEY (PART- II- PEO's) FOR A.Y.2022-23



FEEDBACK ANALYSIS ON BPHARM GRADUATE EXIT SURVEY (PART- III- PO's) FOR A.Y. 2022-23



IQAC Co-ordinator

Principal
PRINCIPAL

Sri Padmavathi School of Pharmacy
TIRUCHANOOR
TIRUPATI (A.P.)



SRI PADMAVATHI SCHOOL OF PHARMACY

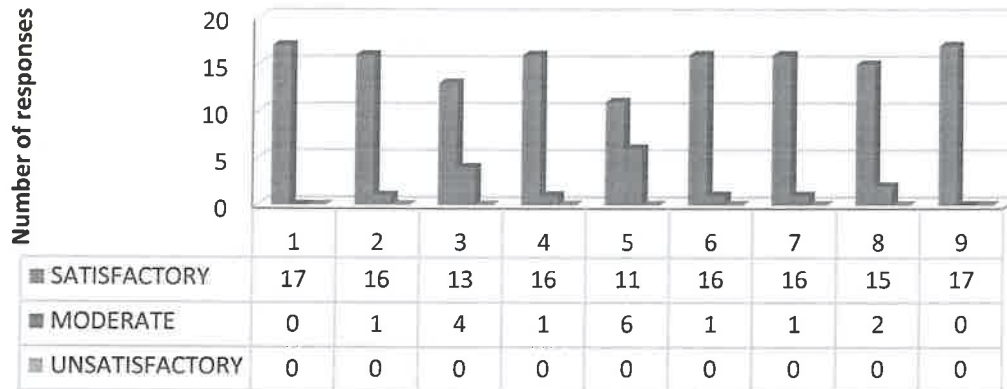
Mohan Gardens, Vaishnavi Nagar, Tiruchanoor (PO), Tirupati Dist, AP - 517503

(Approved by PCI, New Delhi, Affiliated to JNTUA, Ananthapuramu,

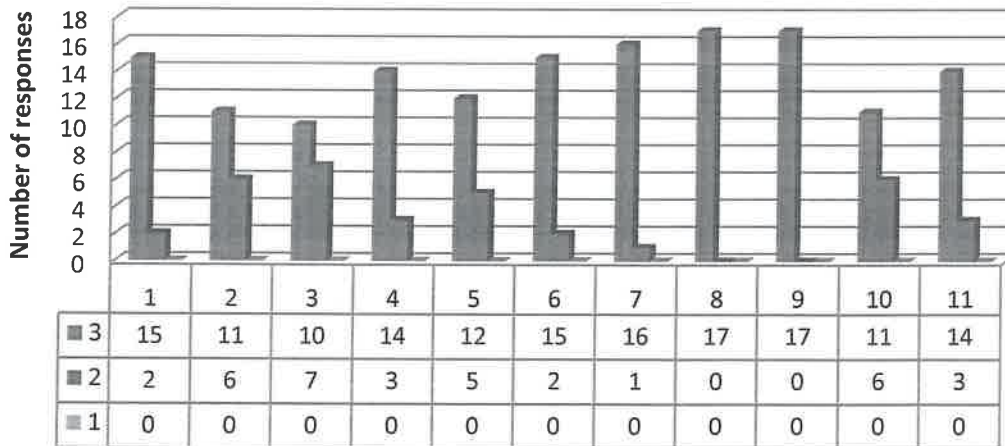
Recognized Under 2(f) & 12(B) of UGC Act., NBA UG-Pharmacy, NAAC 'A')

6.2. FEEDBACK ANALYSIS ON M. PHARMACY GRADUATE EXIT SURVEY FOR 2022-23:


FEEDBACK ANALYSIS ON M PHARM (Analysis) POST GRADUATE EXIT SURVEY (PART- I-General) FOR A.Y. 2022-23



FEEDBACK ANALYSIS ON MPHARM (ANALYSIS) POST GRADUATE EXIT SURVEY (PART- II- PO's) FOR A.Y. 2022-23

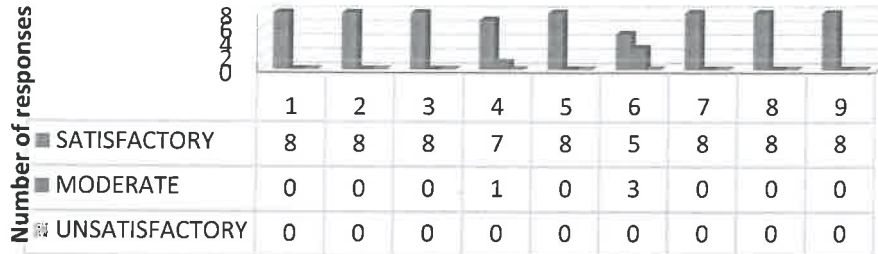



IQAC Co-ordinator

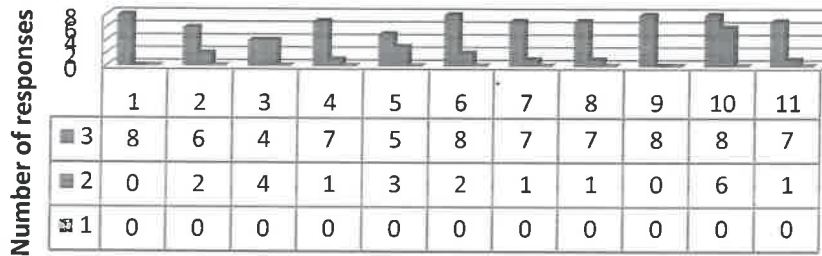

Principal
PRINCIPAL
Sri Padmavathi School of Pharmacy
TIRUCHANOOR
TIRUPATI (A.P.)



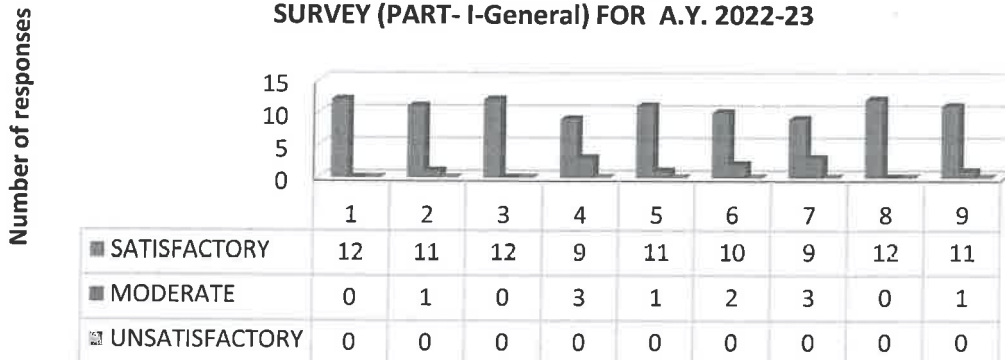
FEEDBACK ANALYSIS ON M PHARM (Ceutics) POST GRADUATE EXIT SURVEY (PART- I-General) FOR A.Y. 2022-23




FEEDBACK ANALYSIS ON MPHARM (Ceutics) POST GRADUATE EXIT SURVEY (PART- II- PO's) FOR A.Y. 2022-23



FEEDBACK ANALYSIS ON M PHARM (Cology) POST GRADUATE EXIT SURVEY (PART- I-General) FOR A.Y. 2022-23

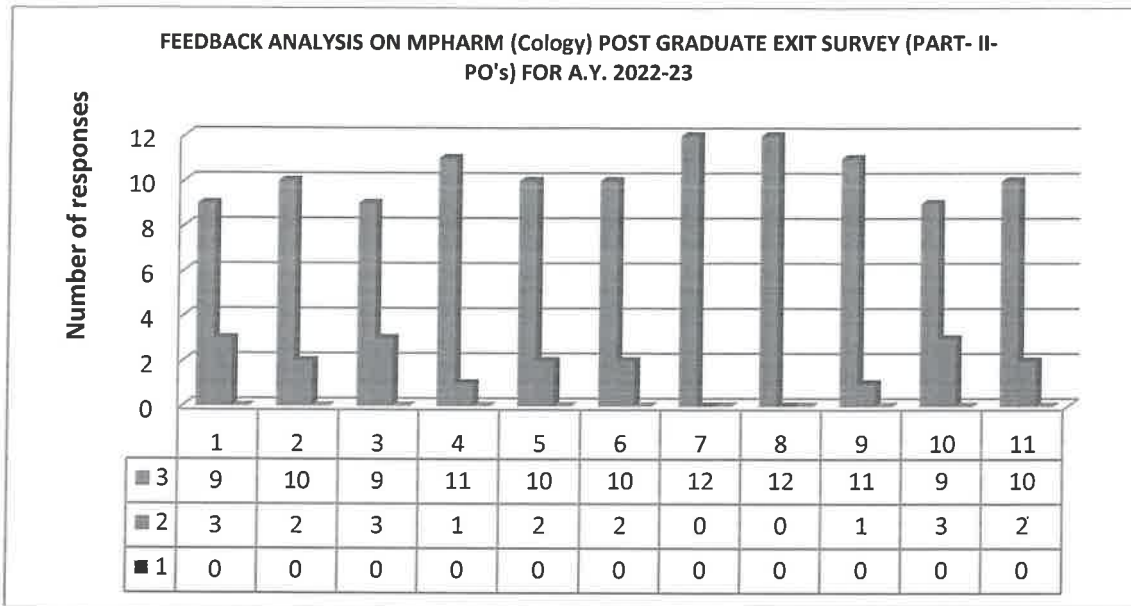



 IQAC Co-ordinator

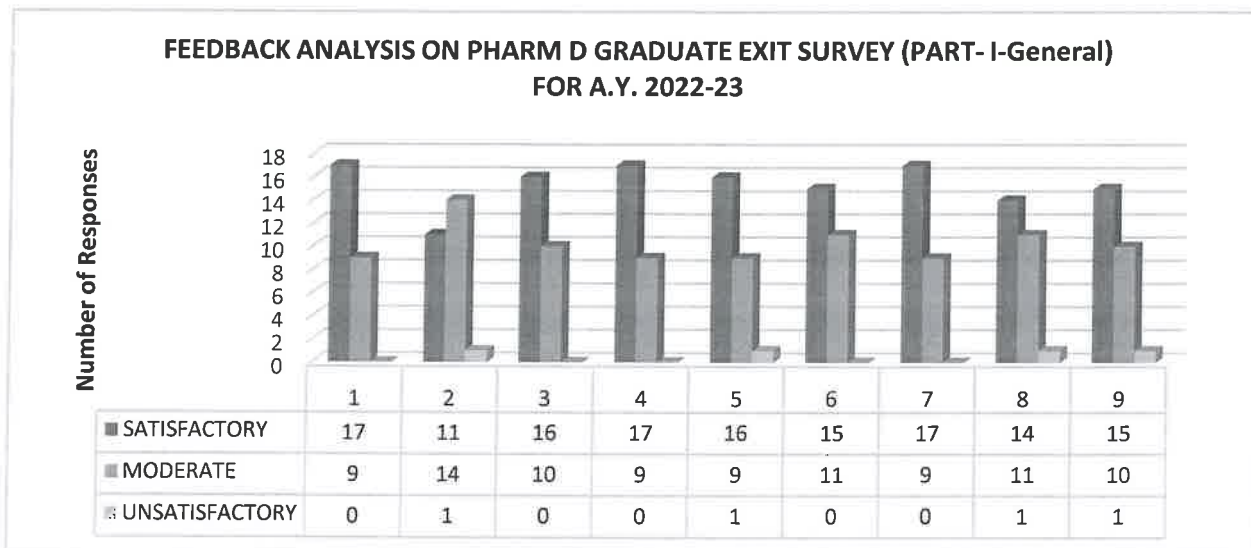

 Principal
PRINCIPAL
 Sri Padmavathi School of Pharmacy
 TIRUCHANOOR
 TIRUPATI (A.P.)



SRI PADMAVATHI SCHOOL OF PHARMACY
 Mohan Gardens, Vaishnavi Nagar, Tiruchanoor (PO), Tirupati Dist, AP - 517503
 (Approved by PCI, New Delhi, Affiliated to JNTUA, Ananthapuramu,
 Recognized Under 2(f) & 12(B) of UGC Act., NBA UG-Pharmacy, NAAC 'A')



6.3. FEEDBACK ANALYSIS ON PHARM D GRADUATE EXIT SURVEY FOR 2022-23:



[Signature]
 IQAC Co-ordinator

[Signature]
 Principal
PRINCIPAL
 Sri Padmavathi School of Pharmacy
 TIRUCHANOOR
 TIRUPATI (A.P.)



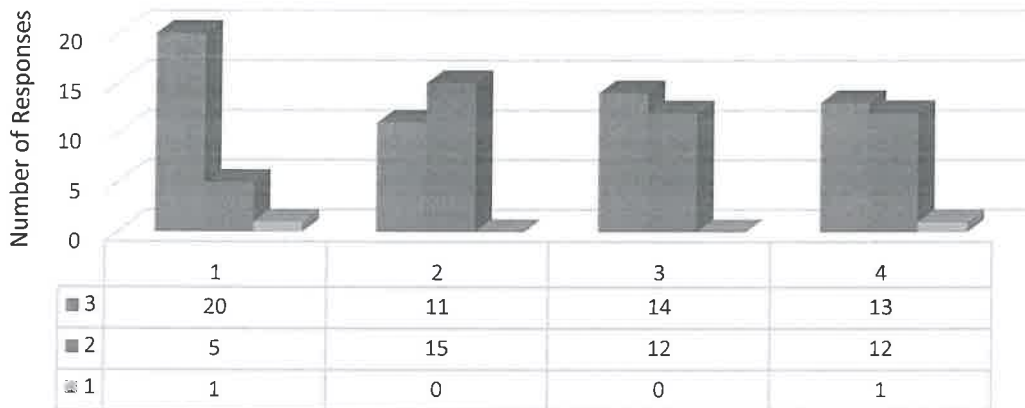
SRI PADMAVATHI SCHOOL OF PHARMACY

Mohan Gardens, Vaishnavi Nagar, Tiruchanoor (PO), Tirupati Dist, AP - 517503

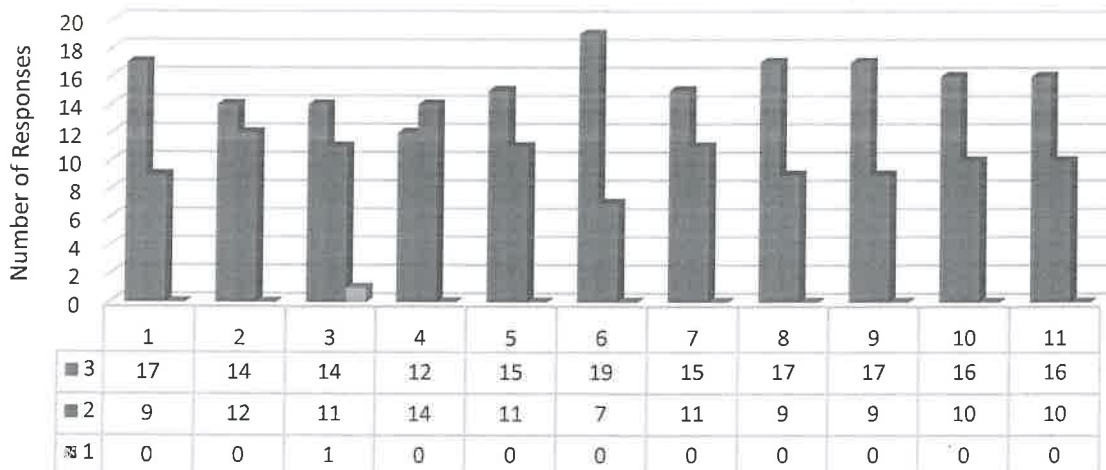
(Approved by PCI, New Delhi, Affiliated to JNTUA, Ananthapuramu,

Recognized Under 2(f) & 12(B) of UGC Act., NBA UG-Pharmacy, NAAC'A')

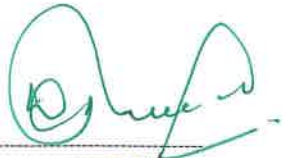
FEEDBACK ANALYSIS ON PHARM D GRADUATE EXIT SURVEY (PART- II-PEO'S) FOR A.Y.2022-23



FEEDBACK ANALYSIS ON PHARM D GRADUATE EXIT SURVEY (PART-III-PO'S) FOR A.Y. 2022-23




IQAC Co-ordinator


PRINCIPAL
Sri Padmavathi School of Pharmacy
TIRUCHANOOR
TIRUPATI (A.P.)



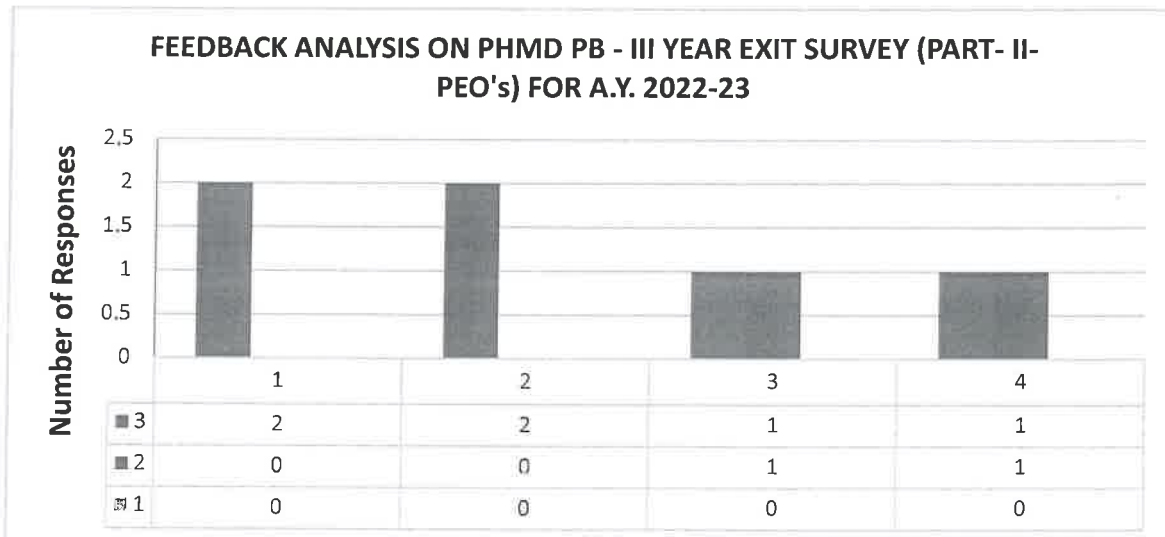
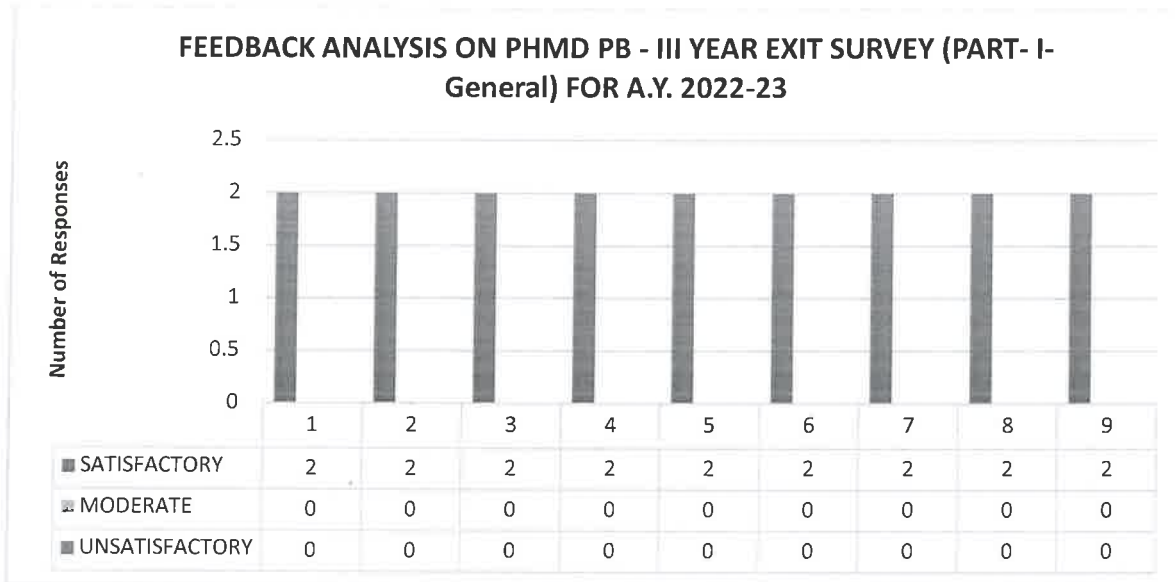
SRI PADMAVATHI SCHOOL OF PHARMACY

Mohan Gardens, Vaishnavi Nagar, Tiruchanoor (PO), Tirupati Dist, AP - 517503

(Approved by PCI, New Delhi, Affiliated to JNTUA, Ananthapuramu,

Recognized Under 2(f) & 12(B) of UGC Act., NBA UG-Pharmacy, NAAC'A')

6.4. FEEDBACK ANALYSIS ON PHARMD PB GRADUATE EXIT SURVEY FOR 2021-22:

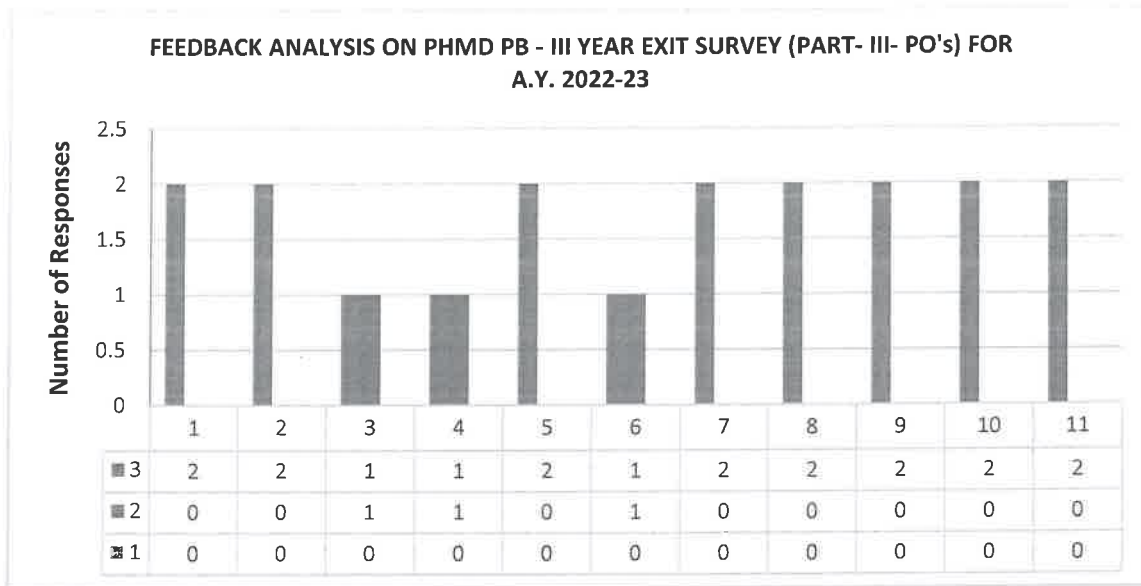


IQAC Co-ordinator

PRINCIPAL
Sri Padmavathi School of Pharmacy
TIRUCHANOOR
TIRUPATI (A.P.)



SRI PADMAVATHI SCHOOL OF PHARMACY
Mohan Gardens, Vaishnavi Nagar, Tiruchanoor (PO), Tirupati Dist, AP - 517503
(Approved by PCI, New Delhi, Affiliated to JNTUA, Ananthapuramu,
Recognized Under 2(f) & 12(B) of UGC Act., NBA UG-Pharmacy, NAAC 'A')



ANALYSIS REPORT : The feedback from the Outgoing students on Graduate Exit survey was collected and analysis was done. In the analysis, it was observed that most of the students were satisfied. Any inputs received from the students, they were passed over to the IQAC for the further actions.

IQAC Co-ordinator

Principal
PRINCIPAL

Sri Padmavathi School of Pharmacy
TIRUCHANOOR
TIRUPATI (A.P.)

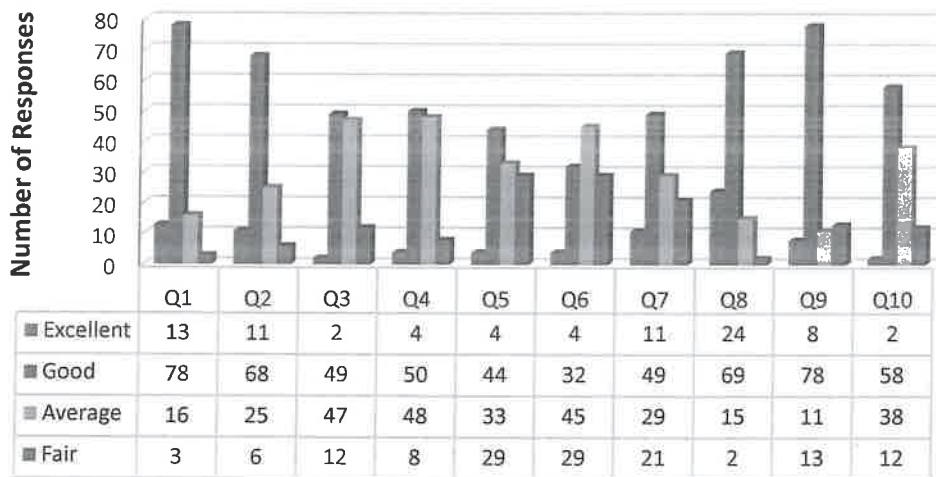


FEEDBACK ANALYSIS & ACTION TAKEN REPORT: 2022-23

4. FEEDBACK FROM HOSTELLERS:


S.NO	Feedback parameter	Feedback collection	Feedback submissions/ analysis	Corrective actions taken
1.	Feedback from hostellers	Bpharm PharmD Hosteller students	Few students reported to change the menu and requested to provide the hot water facility	The IQAC discussed about the hot water facility with the management and action was taken. The IQAC discussed about the food menu with the management and necessary action was taken.

FEEDBACK ANALYSIS OF HOSTELLERS FOR A.Y. 2022-23



ANALYSIS REPORT : The feedback from the students in hostellers was collected every year and analysis of the feedback forms was done. In the analysis, it was observed that most of the students were satisfied. Any inputs received from the students, they were passed over to the IQAC for the further actions.


IQAC Co-ordinator

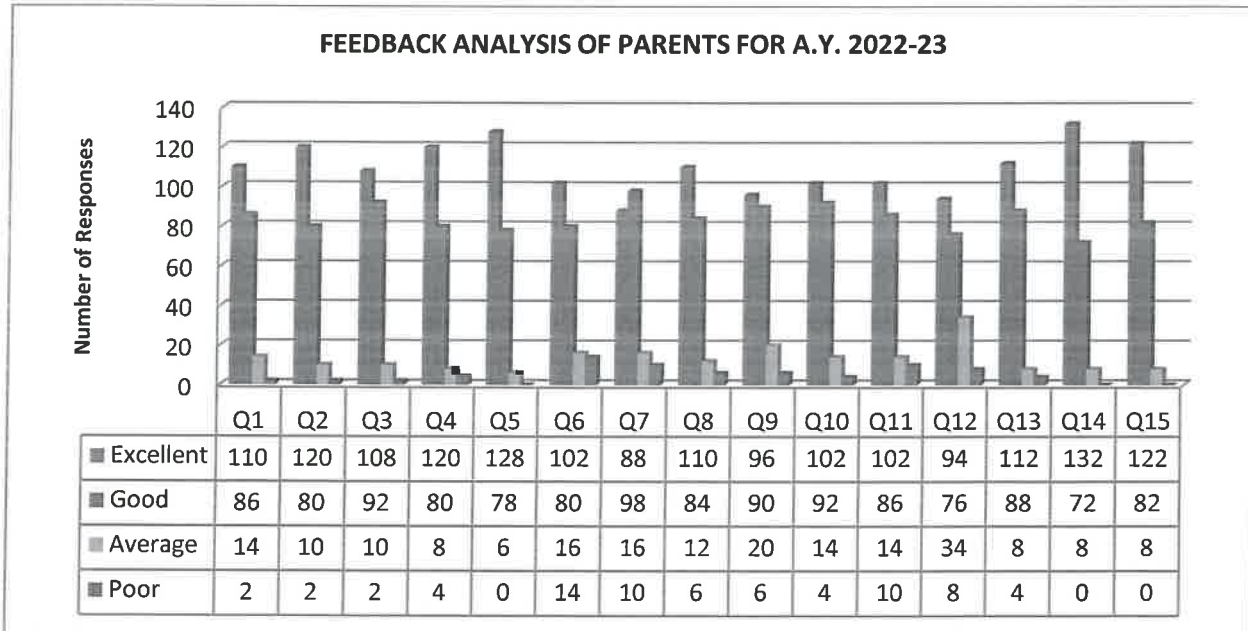

PRINCIPAL
Sri Padmavathi School of Pharmacy
TIRUCHANOOR
TIRUPATI (A.P.)



FEEDBACK ANALYSIS & ACTION TAKEN REPORT: 2022-23

1.3. FEEDBACK FROM PARENTS:


S.NO	Feedback parameter	Feedback collection	Feedback submissions/ analysis	Corrective actions taken
1.	Feedback from Parents	Parents [B PHARM, PHARM D, M PHARM.]	In the stake holders feedback, Few parents suggested to increase placement drives for students	IQAC advised the training and placement cell to enhance the placement drives for the upcoming academic year.



ANALYSIS REPORT :

The institute will collect the feedback from Parents, as the parents are one of the important stakeholders and analysis was done. In the analysis. The suggestions received from the Parents, they were forwarded to the IQAC for the further actions.


 IQAC Co-ordinator


 Principal
PRINCIPAL
 Sri Padmavathi School of Pharmacy
 TIRUCHANOOR
 TIRUPATI (A.P.)



SRI PADMAVATHI SCHOOL OF PHARMACY

Mohan Gardens, Vaishnavi Nagar, Tiruchanoor (PO), Tirupati Dist, AP - 517503

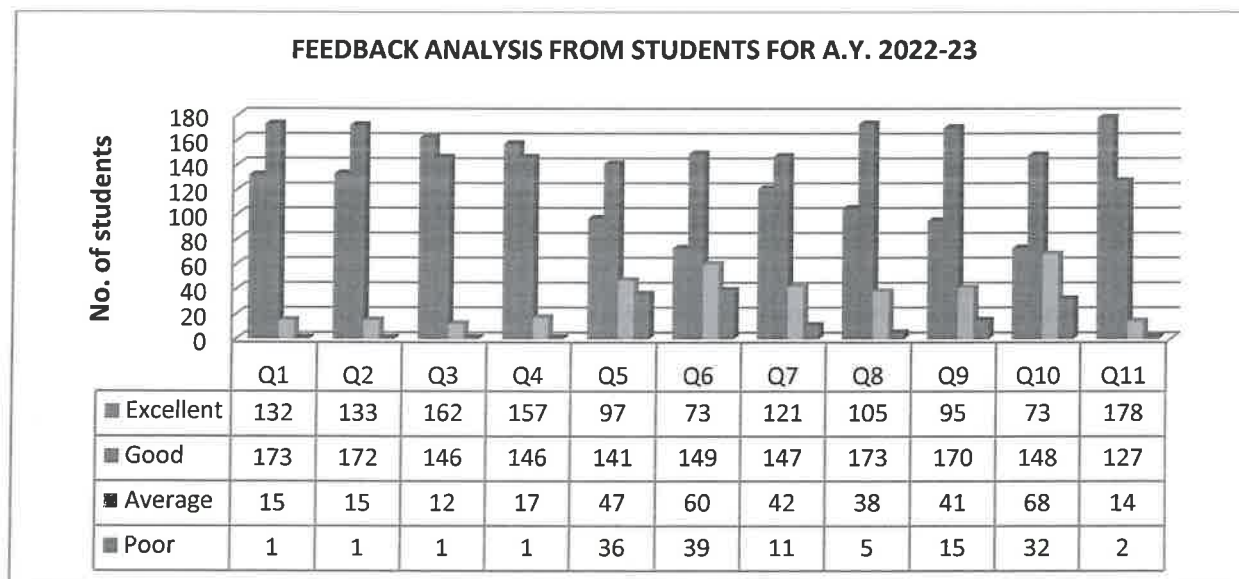
(Approved by PCI, New Delhi, Affiliated to JNTUA, Ananthapuramu,

Recognized Under 2(f) & 12(B) of UGC Act., NBA UG-Pharmacy, NAAC'A')

FEEDBACK ANALYSIS & ACTION TAKEN REPORT: 2022-23


1.4. FEEDBACK FROM STUDENTS

S.NO	Feedback parameter	Feedback collection	Feedback submissions/ analysis	Corrective actions taken
1.	Feedback from students on facilities	All BPharm, PharmD and MPharm Students.	Few students reported to increase the internet connectivity and increase the extracurricular activities frequently.	Necessary actions were taken to improve the Wi-Fi connectivity and more extracurricular programs were planned for the upcoming academic year.



ANALYSIS REPORT : The institute will collect the feedback from Students, as the students are one of the important stakeholders and analysis was done by the feedback committee. Any inputs received from the students, they were passed over to the IQAC for the further actions.


IQAC Co-ordinator


Principal
PRINCIPAL
Sri Padmavathi School of Pharmacy
TIRUCHANOOR
TIRUPATI (A.P.)

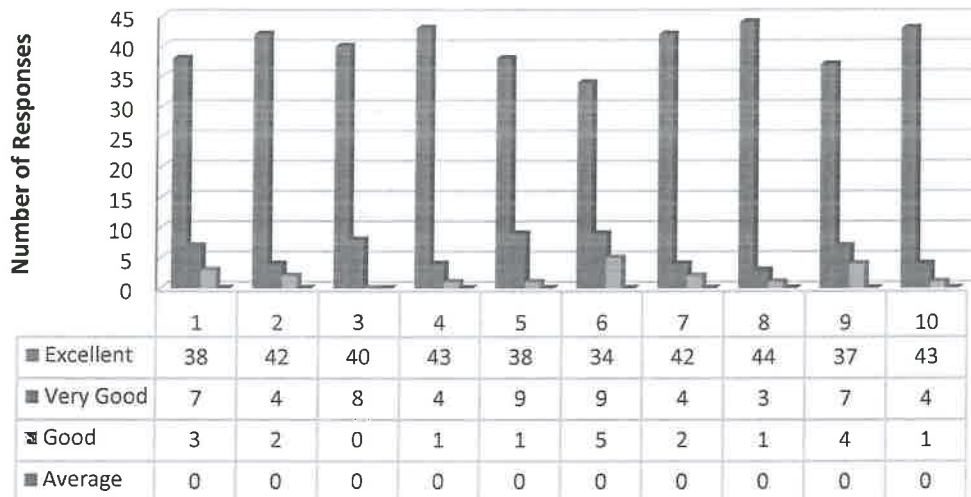


FEEDBACK ANALYSIS & ACTION TAKEN REPORT: 2022-23

1.5. FEEDBACK FROM TEACHING STAFF:

S.NO	Feedback parameter	Feedback collection	Feedback submissions/ analysis	Corrective actions taken
1.	Feedback from Teaching staff	Teaching staff[B PHARM, PHARM D, M PHARM].	Most of the faculty were satisfied and has submitted the feedback ranging from good to excellent	NIL

FEEDBACK ANALYSIS FROM TEACHING STAFF FOR A.Y. 2022-23



ANALYSIS REPORT : The institute will collect the feedback from the Teaching staff as the Teachers are one of the important stakeholders and analysis of the feedback forms was done by the feedback committee. In the analysis, it was observed that most of the feedback ranges from good to excellent. The inputs received from them were passed over to the IQAC for the further actions.


IQAC Co-ordinator


PRINCIPAL
Sri Padmavathi School of Pharmacy
TIRUCHANOOR
TIRUPATI (A.P.)



SRI PADMAVATHI SCHOOL OF PHARMACY
Mohan Gardens, Vaishnavi Nagar, Tiruchanoor (PO), Tirupati Dist, AP - 517503
(Approved by PCI, New Delhi, Affiliated to JNTUA, Ananthapuramu,
Recognized Under 2(f) &12(B) of UGC Act., NBA UG-Pharmacy, NAAC 'A')

FEEDBACK ANALYSIS & ACTION TAKEN REPORT-2022-23

The feedback forms collected for the academic year 2022-23 are as following:

FEEDBACK FORMS	RESPONDENTS
1. FEEDBACK FROM STAKE HOLDERS	<ul style="list-style-type: none">❖ FEEDBACK ON INSTITUTION❖ EMPLOYER❖ PARENTS❖ STUDENTS (FACILITIES)❖ TEACHING STAFF
2. FEEDBACK ON FACULTY	All B.Pharm, M.Pharm and Pharm D Students.
3. FEEDBACK ON CURRICULUM	All B.Pharm, M.Pharm and Pharm D Students.
4. FEEDBACK OF HOSTELLERS	All B.Pharm, M.Pharm and Pharm D Students.
5. FEEDBACK ON COURSE END SURVEY	All B.Pharm and Pharm D Students.
6. FEEDBACK ON GRADUATE EXIT SURVEY	All B.Pharm, M.Pharm and Pharm D Outgoing Students.


IQAC Co-ordinator

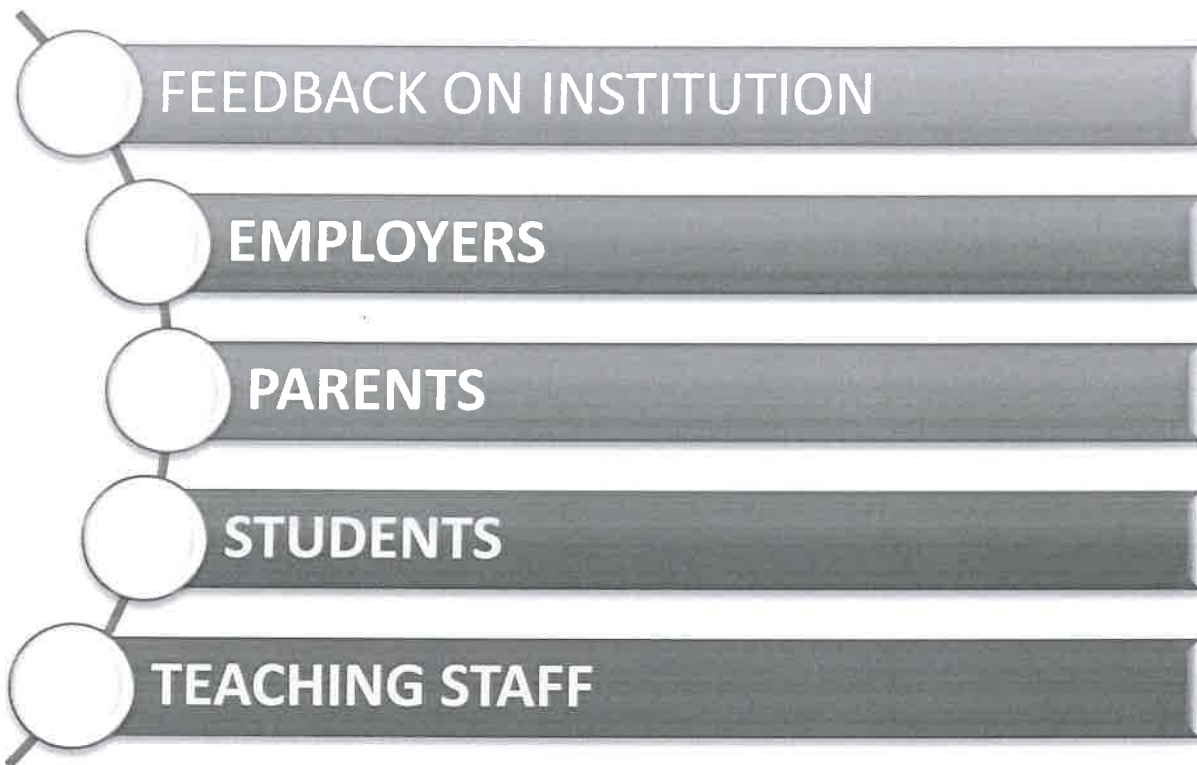

Principal
Sri Padmavathi School of Pharmacy,
TIRUCHANOOR
TIRUPATI (A.P.)




1. FEEDBACK ANALYSIS FROM STAKEHOLDERS:

The institute will collect the feedback forms from different stakeholders on Facilities.

Different stake holders are:




IQAC Co-ordinator


Principal
PRINCIPAL
Sri Padmavathi School of Pharmacy
TIRUCHANOOR
TIRUPATI (A.P.)